

Magnetventil NAMUR, 5/2- und 5/3-Wege

Solenoid valve NAMUR, 5/2- and 5/3- ways
Elettrovalvola NAMUR, 5/2- e 5/3-vie

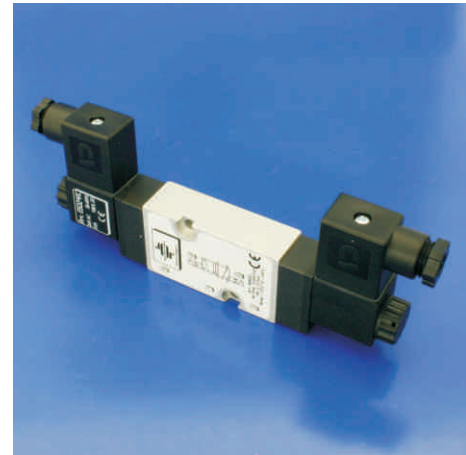
MNI52
MNI53

Beschreibung (Description / Descrizione)

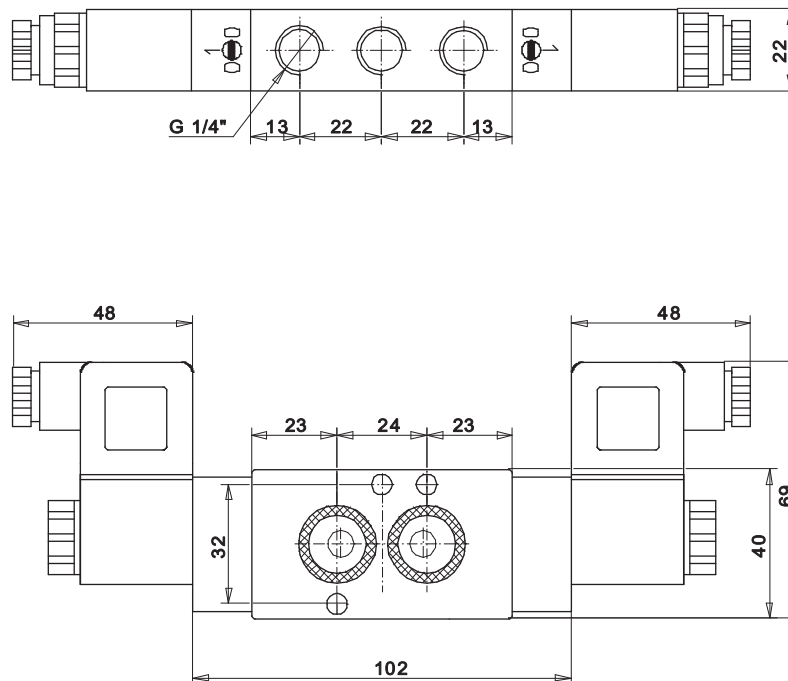
- Magnetventil NAMUR mit verschiedenen Funktionen wie 5/2- oder 5/3-Wege erhältlich mit Standardspulen und Gerüstesteckern
- Impulsausführung
- Serienmäßig mit Notbetätigung, Messing
- Gehäuse Aluminium eloxiert, mit minimalen Außenabmessungen
- Kolben Edelstahl 1.4305
- Dichtungen aus NBR
- Schrauben Edelstahl 1.4301

- Solenoid valve NAMUR available with different functions like e. g. 5/2- or 5/3-ways with standard coils and connectors
- Dual stable version
- Manual override as standard, brass
- Body aluminum anodised, with min. external dimensions
- Piston stainless steel AISI 303
- Sealings NBR
- Screws stainless steel AISI 304

- Elettrovalvola NAMUR disponibile in esecuzioni diversi come 5/2- o 5/3-vie con bobine e connettori standard
- Versione bistabile
- Comando manuale in serie, ottone
- Corpo alluminio anodizzato, con dimensioni esterne ridotte
- Pistone acciaio inox AISI 303
- Guarnizioni NBR
- Viti acciaio inox AISI 304



Maßzeichnung (Dimensions / Dimensioni)



Magnetventil NAMUR, 5/2- und 5/3-Wege

Solenoid valve NAMUR, 5/2- and 5/3- ways
Elettrovalvola NAMUR, 5/2- e 5/3-vie

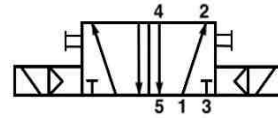
MNI52
MNI53

Technische Daten (Technical features / Dati tecnici)

Anschluss Air entry / Connessione	G 1/4"
Nennweite Dimension / Dimensione	7mm
Arbeitsdruck Air pressure / Pressione di utilizzo	2-10 bar
Temperatur Temperature / Temperatura	-20°C ... +50°C
Schutzart Enclosure / Grado di protezione	IP65 - DIN 40050
Spannung Voltage / Tensione	DC: 12V, 24V AC: 24V, 48V, 115V, 230V
Leistung Power consumption / Potenza assorbita	DC: 3W / AC: 5VA
Nenndurchfluss Air flow / Portata	1250 l/min

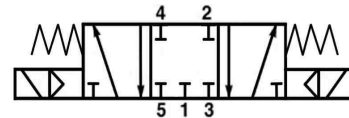
MNI52 (5/2-Wege)

(5/2-ways) / (5/2-vie)



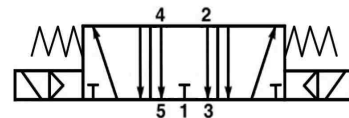
MNI53-MSG (5/3-Wege)

(5/3-ways) / (5/3-vie)



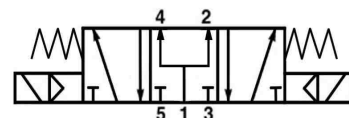
MNI53-MSE (5/3-Wege)

(5/3-ways) / (5/3-vie)



MNI53-MSB (5/3-Wege)

(5/3-ways) / (5/3-vie)



MSG = Mittelstellung geschlossen

MSG = Center position closed
MSG = Posizione centrale chiuso

MSE = Mittelstellung entlüftet

MSE = Center position deaerated
MSE = Posizione centrale disaerato

MSB = Mittelstellung belüftet

MSB = Center position aerated
MSB = Posizione centrale aerato

Artikelnummer (Code number / Numero codice)

Preisliste Seite 6 Price list page 6 / Listino dei prezzi pagina 6

Spannung Voltage / Tensione	Artikelnummer Code number / Numero codice
12V DC	012DC
24V DC	024DC
24V AC	024AC
48V AC	048AC
115V AC	115AC
230V AC	230AC



MANDALAY
PCF
VALVES ACTUATION CONTROLS

+612 9615 9774

contact@mandalaypcf.com.au

MNI [] [] [] [] [] [] - [] [] []

Model

Funktion
Function / Funzione
(52/53)

Spannung

Voltage / Tensione
(012DC/024DC/024AC/
048AC/115AC/230AC)

Ausführung von MNI53
Version of MNI53 / Tipo di MNI53
(MSG/MSE/MSB)

www.mandalaypcf.com.au