

# FLOWMETER DFM 165-350

Nominal size DN 10-65

Nominal size 3/8"-2 1/2"

Nominal pressure PN 10 bar

## Features

- Measuring range 3 to 50,000 l/h
- suitable for a wide range of applications for gaseous medium types, water, lyes, acids
- direct visualisation of the measured values
- accuracy class 4
- integrated mounting rail for flow data sensors

## Additional options on request

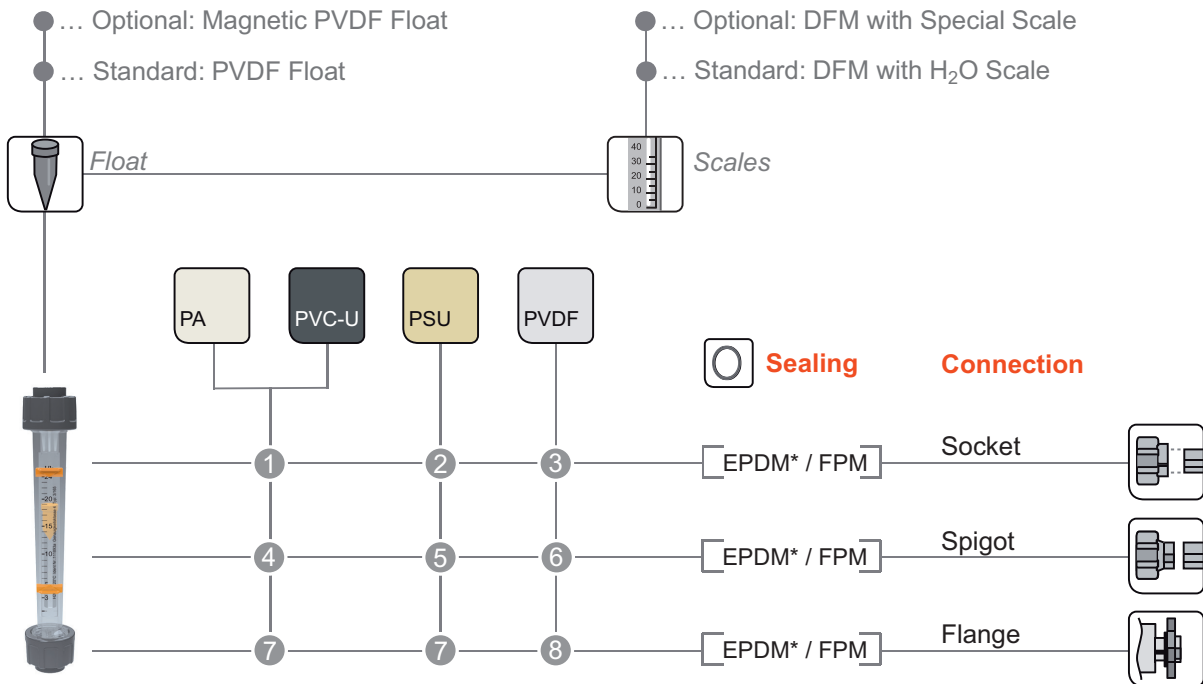
- Free of paint wetting impairment substances
- Flow data sensor
- special scales

## Note

Flow data sensor only in combination with magnetic float



[www.stuebbe.com/en/products-systems/instrumentation/](http://www.stuebbe.com/en/products-systems/instrumentation/)



### Basic Nominal Sizes:

DN 8	DN 10	DN 15	DN 20	DN 25	DN 32	DN 40	DN 50	DN 65	DN 80	DN 100	DN 125	DN 150	DN 200	DN 250	DN 300	DN 350	DN 400
------	-------	-------	-------	-------	-------	-------	-------	-------	-------	--------	--------	--------	--------	--------	--------	--------	--------

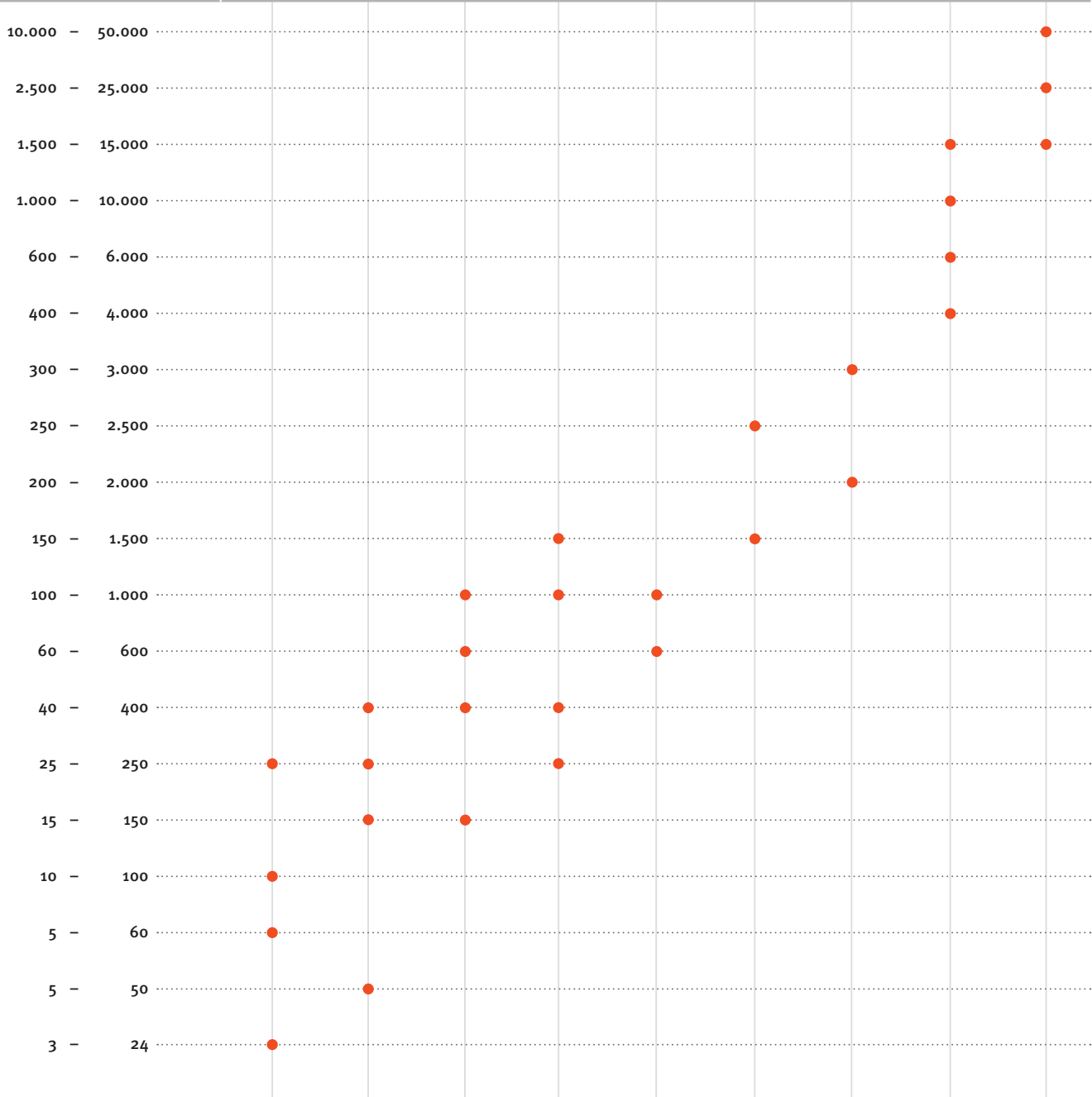
### Connection Material (process connection)

<p>1 PVC-U socket <b>DIN, ANSI, BS, JIS*</b>          female thread Rp.          1.4571 male thread R.*          female thread Rp.          MS female thread Rp.          PP socket <b>DIN</b></p> <p>2 PVC-U socket <b>DIN, ANSI, BS, JIS*</b>          female thread Rp.          1.4571 male thread R.*          female thread Rp.          MS female thread Rp.          PP socket <b>DIN</b>.          female thread Rp.*</p> <p>3 PVDF socket <b>DIN</b></p>	<p>4 PE spigot <b>DIN</b> (95mm).**          PP spigot IR</p> <p>5 PP spigot IR.**          PE spigot <b>DIN</b> (95mm).**</p> <p>6 PVDF spigot IR.***</p> <p>7 PP-St. flange <b>DIN, ANSI</b>.**          GFK flange <b>DIN</b>.**</p> <p>8 PP-St. flange <b>DIN, ANSI</b>.**</p> <p>* available up to DN 50.          ** available from DN 15.          *** available in DN 15-50.</p>
----------------------------------------------------------------------------------------------------------------------------------------------------------------------------------------------------------------------------------------------------------------------------------------------------------------------------------------------------------------------------------------------------------------------------------------------------------------------------------------------------------------	--------------------------------------------------------------------------------------------------------------------------------------------------------------------------------------------------------------------------------------------------------------------------------------------------------------------------------------------------------------------------------------------------------------

**Flowmeter DFM 165–350**



Type	DFM 165	DFM 170	DFM 185	DFM 200	DFM 350				
d (mm)	16	20	25	32	32	40	50	63	75
DN (mm)	10	15	20	25	25	32	40	50	65
DN (inch)	3/8	1/2	3/4	1	1	1 1/4	1 1/2	2	2 1/2
Measuring range (l/h)									



**Application**

- Measurement of the flow in pipe systems with visual display of the measured values

**Use**

- Chemical plant manufacture
- Water treatment

**Function**

- The medium – water, air, fluid or gaseous chemicals – flows vertically through the flowmeter from the bottom to the top.

The float is lifted with no friction by the flow forces and directly indicates the flow volume specified on the measuring tube scale with its top read-off edge (maximum diameter). The measuring tube contains the float, made of PVDF as a standard, as well as the float trap.

**Version**

- Equipped with measuring range scale l/h for water 20°C as a standard.
- two displaceable set-point value indicators
- floats made of PVDF, optionally with magnet
- optionally flow data sensors ZE 3000/3075 for process automation for continuous measuring
- optionally limit reed switches ZE 950/ZE 951 for electric signalling of min./max values

**Measuring range**

- see measuring range overview

**Measuring accuracy**

- Class 4 according to VDI/VDE 3513, page 2  
VDI = Verein Deutscher Ingenieure (Association of German Engineers)  
VDE = Verband Deutscher Elektrotechniker (Association for Electrical, Electronic & Information Technologies)

**Flow medium**

- Technically pure, neutral or aggressive fluid or gaseous medium types, provided that the valve components coming into contact with the medium are resistant at the operating temperature according to the Stübbe resistance guide.

**Operating note**

A PVC-U measuring tube cannot be used for gaseous medium types.

**Flow direction**

- from bottom to top

**Stübbe resistance guide**

[www.stuebbe.com/pdf\\_resistance/300051.pdf](http://www.stuebbe.com/pdf_resistance/300051.pdf)

**Viscosity**

- for medium types differing from H<sub>2</sub>O
- DN 10–40: maximum 200–350 mPa
- DN 50–65: maximum 500 mPa

**Process temperature**

- see pressure/temperature diagram

**Process pressure**

- see pressure/temperature diagram

**Nominal pressure (H<sub>2</sub>O, 20 °C)**

- PN 10 bar

**Size**

- DN 10–65

**Device connection**

- Connection thread according to DIN 8063 with process connection according to pictogram

**Flowmeter DFM 165–350****Material with medium contact**

Measuring tube:

- PA
- PVC-U
- PSU
- PVDF

Float:

- PVDF without magnet
- PVDF with liquid-tight sealed magnet for electronic measurement

Insert/stop:

- PVDF

Sealing:

- FPM
- EPDM

Union nut/union ends:

- PVC
- PP
- PVDF

**Material, no medium contact**

Set-point indicator:

- PE

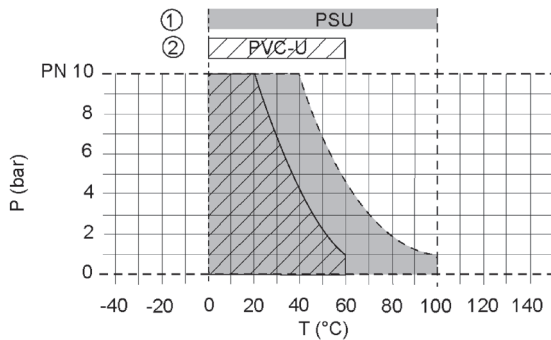
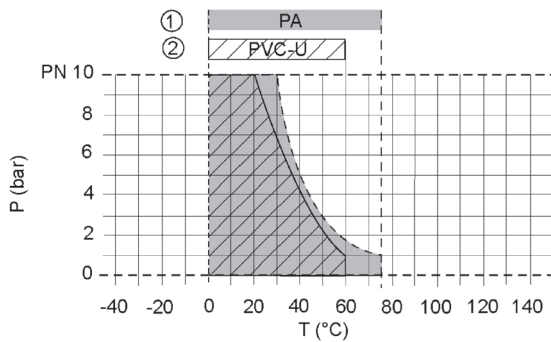
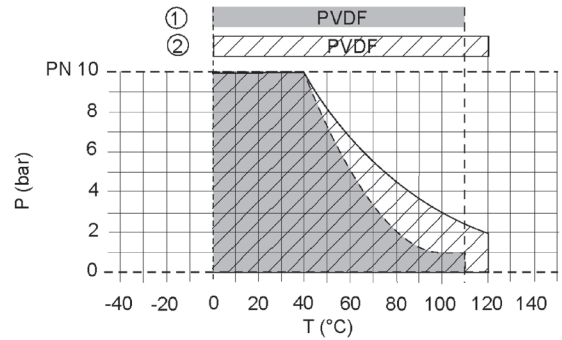
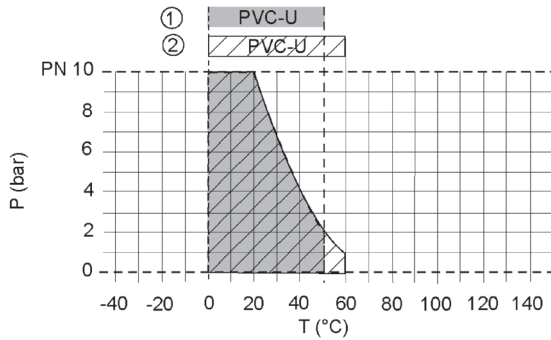
**Mounting position**

- vertical

**Accessories**

- Special scales for:
  - Medium air (Nm<sup>3</sup>/h) at 20 °C and 0–3 bar
  - Medium NaOH (l/h) at 30 °C
  - Medium HCl (l/h) at 30/50 °C
  - Medium FeCl<sub>3</sub> (l/h) at 40–41 °C
  - Medium US GPMfurther special scales on request
- Flow data sensors ZE 3000/ZE 3075 for process automation
- optionally limit reed switches ZE 950/ZE 951 for electric signalling of min./max values

### Pressure/temperature diagram



Description	
P	Operating pressure
T	Temperature
1	Measuring tube
2	Connection

The pressure/temperature limits of the materials are applicable for the stated nominal pressures and a computed operating life factor of 25 years. The values are a guide for flow medium types (DIN 2403) to which the valve material is resistant. For other flow medium types please refer to the Stübbe resistance guide; reduction ratios may have to be taken into account. The operating life of the wear parts depends on the conditions of use. The rated pressure (PN) depends on the size and material of the measuring tube/connection.

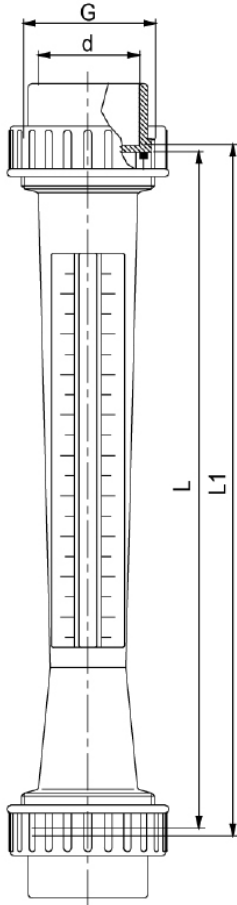
**Flowmeter DFM 165–350**
**Conversion of flow rate units**

	m <sup>3</sup> /s	m <sup>3</sup> /h	l/min	GPM (GB)	GPM (US)	ft <sup>3</sup> /s
1 m <sup>3</sup> /s	1	3600	60 000	13 198	15 850	36.3
1 m <sup>3</sup> /h	2.788 · 10 <sup>-4</sup>	1	16.667	3.663	4.405	9.803 · 10 <sup>-3</sup>
1 l/min	1.667 · 10 <sup>-5</sup>	6 102	1	0.219	0.264	0.163
1 GPM (GB)	7.577 · 10 <sup>-5</sup>	0.273	4.55	1	0.833	2.676 · 10 <sup>-3</sup>
1 GPM (US)	6.309 · 10 <sup>-5</sup>	0.227	3.783	1.203	1	2.225 · 10 <sup>-3</sup>
1 ft <sup>3</sup> /s	2.833 · 10 <sup>-2</sup>	102	1700	373.69	444.44	1

**Pressure loss values DFM 165–350**

	d (mm)	DN (mm)	DN (inch)	Δp water 20 °C (mbar)	Δp air 20 °C (mbar)
DFM 165	16	10	3/8	3.3	4.8
DFM 170	20	15	1/2	2.5	4.3
DFM 185	25	20	3/4	6.1	8.3
DFM 200	32	25	1	6.1	8.3
DFM 350	32	25	1	12.3	15.9
	40	32	1 1/4	12.3	15.9
	50	40	1 1/2	12.3	15.9
	63	50	2	22.2	27.1
	75	65	2 1/2	33.7	40.0

### Connection socket



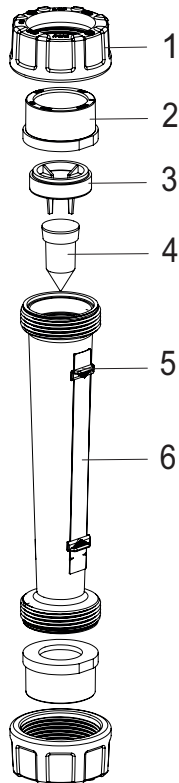
Type	DFM 165	DFM 170	DFM 185	DFM 200	DFM 350					
d (mm)	16	20	25	32	32	40	50	63	75	
DN (mm)	10	15	20	25	25	32	40	50	65	
DN (inch)	3/8	1/2	3/4	1	1	1 1/4	1 1/2	2	2 1/2	
G*	3/4	1	1 1/4	1 1/2	1 1/2	2	2 1/4	2 3/4	3 1/2	
L	PA, PVC-U, PSU	165	170	185	200	350	350	350	350	350
	PVDF	161.3	166.3	181.0	195.5	340.5	340.5	340.5	340.5	340.5
L1	PA, PVC-U, PSU	171	176	191	206	356	356	356	356	356
	PVDF	167.3	169.3	187.0	201.5	346.5	346.5	346.5	346.5	346.5

all dimensions in mm / \* dimensions in inch



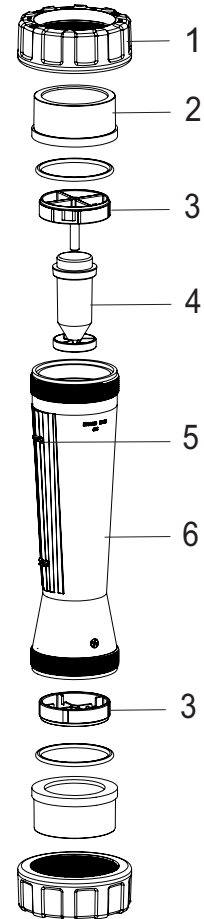
**Flowmeter DFM 165-350**

Components DFM 165-200



Position	Designation
1	Union nut
2	Union end
3	Insert/stop
4	Float
5	Set-point indicator
6	Measuring tube

Components DFM 350



Position	Designation
1	Union nut
2	Union end
3	Insert/stop
4	Float
5	Set-point indicator
6	Measuring tube