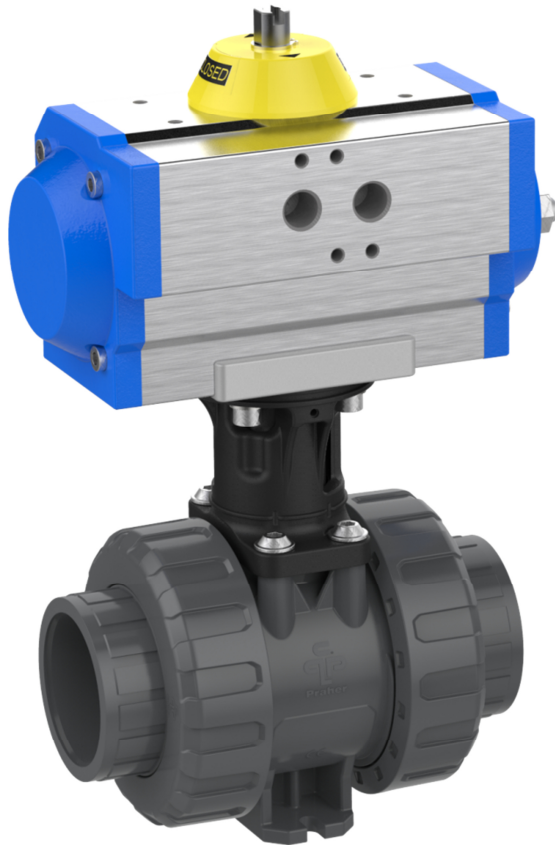


2 ball valve M1 with integrated Praher Labeling System



General:

- Valve body: PVC-U
- Sealing material: EPDM / FPM
- Ball seating joint: PTFE
- Dimensions: DN10 – DN80
d16 – d110
d3/8" – d4"

Connector types:

- Solvent socket: DIN / ASTM
- Solvent spigot: DIN
- Threaded socket: BSP / NPT
- PE fusion socket: DIN
- PE fusion spigot: DIN
- Backing flange: DIN
- Fix flange: DIN / ANSI / JIS

Operating pressure:

PVC-U DN10 – DN80 d110	PN16
PVC-U DN10 – DN80 d110	PN10
Backing flange	

Technical features:

Ball Valve

- Silicone free
- Buttress thread
- Double axial gasket
- Floating ball
- Double sided blocked ball
- Adjustable ball seating joint
- Integrated bottom mounting stand
- Radial installation or removal
- Maintenance free

Actuator

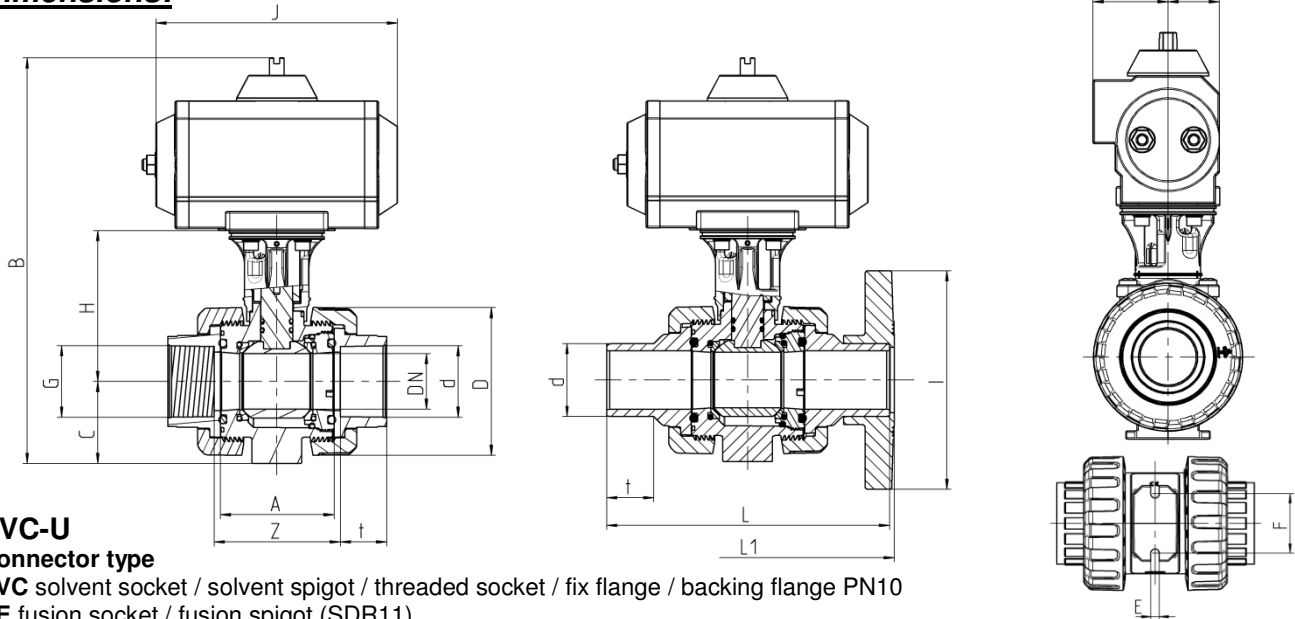
- Technical details on page 6

This document does not constitute a guarantee, it is for initial information purpose only. The product range is continually upgraded, the designs and types therefore only reflect the state of the art at the time of printing. Subject to technical modifications!

2 ball valve M1 with integrated Praher Labeling System



Dimensions:



PVC-U

Connector type

PVC solvent socket / solvent spigot / threaded socket / fix flange / backing flange PN10

PE fusion socket / fusion spigot (SDR11)

DN	10	15	20	25	32	40	50	65	80	80
d	16	20	25	32	40	50	63	75	90	110
ISO flange	F04	F04	F04	F04	F05	F05	F05	F07	F07	F07
G TSO ¹	3/8"	1/2"	3/4"	1"	1 1/4"	1 1/2"	2"	2 1/2"	3"	4"
A	45	45	53,5	54	62	78	87	111,5	135,5	135,5
C	33	33	40	43	51	56	64	85	100	100
D	55,5	55,5	62	70	84	101	115	149	182	182
E	5,5	5,5	5,5	6,5	6,5	6,5	6,5	8,3	10,3	10,3
F	34	34	36	38	40	45	50	65	80	80
H	80	80	85,5	88	97	103	109,5	136,5	159,5	159,5
I	-	97	105	125	140	150	165	185	200	-
t SSO ²	16	16,5	19,5	23	26,5	31,5	38,5	44,5	56,5	61
t SSP ³	17	16,5	19,5	23	26,5	31,5	38,5	44,5	54	-
Z SSO ²	51	50	59,5	60	68,5	86	98	122	152,5	162
Z TSO ¹	48	50	60	60	68	87	98	122	156	-
L SSP ³	98	123,5	143,5	153,5	173,5	193,5	223,5	259,5	297	-
L1 FF ⁴	-	130	150	160	180	200	230	266	307,5	-
Antrieb	UT05DA			UT15DA			UT20DA			
B	214	214	226,5	232	269	280	294,5	364,5	402,5	402,5
J	119	119	119	119	165	165	165	178	178	178
K	40	40	40	40	50	50	50	53	53	53
M	27	27	27	27	35	35	35	43	43	43
Antrieb	UT05SR			UT15SR		UT17SR	UT30SR	UT35SR		
B	214	214	226,5	232	269	280	294,5	383,5	455	455
J	119	119	119	119	165	165	197	230	246	246
K	40	40	40	40	50	50	50	61,5	72,5	72,5
M	27	27	27	27	35	35	35	52	65,5	65,5

¹ TSO = threaded socket
² SSO = solvent socket

³ SSP = solvent spigot
⁴ FF = fix flange

⁵ - = currently not realised

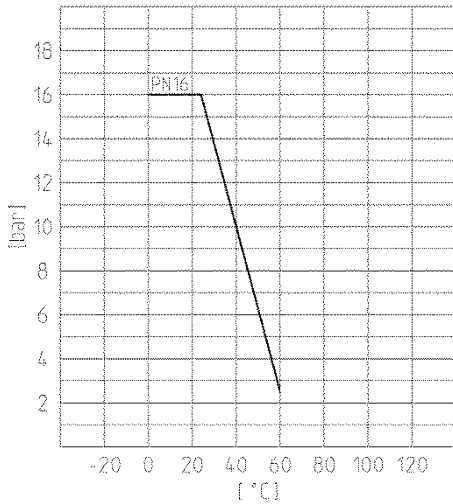
Dimensions in mm

2 ball valve M1 with integrated Praher Labeling System

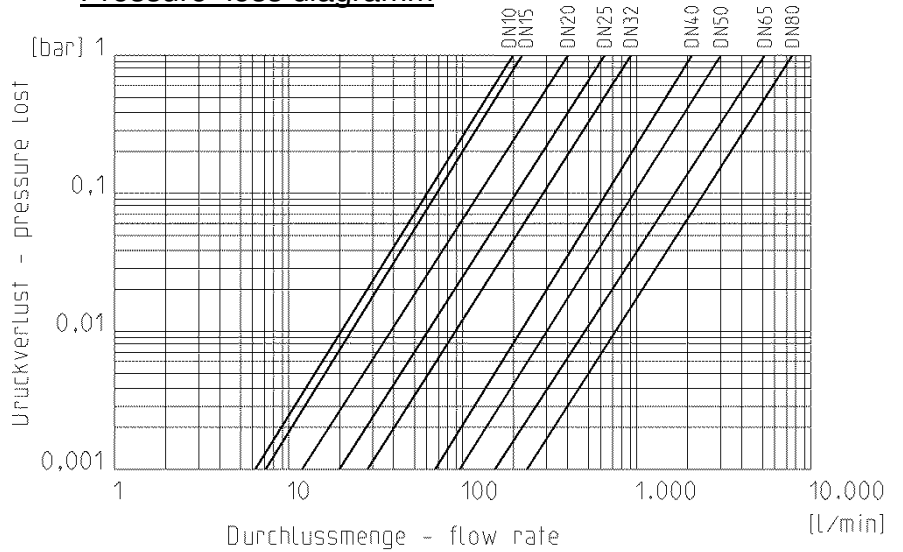


Diagrams:

Pressure – Temperature



Pressure loss diagramm

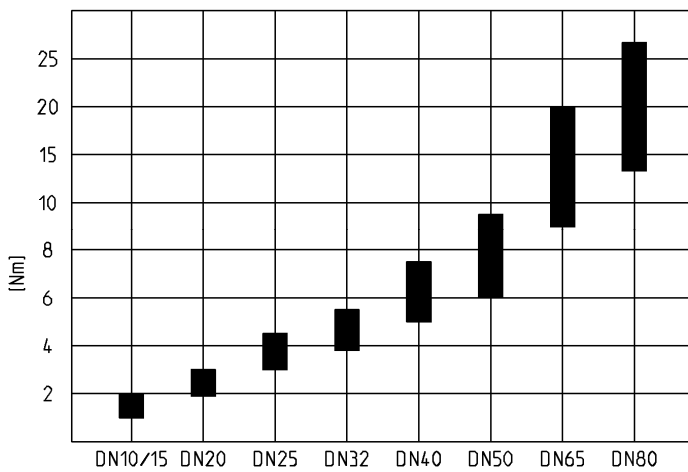


Cv value tabelle

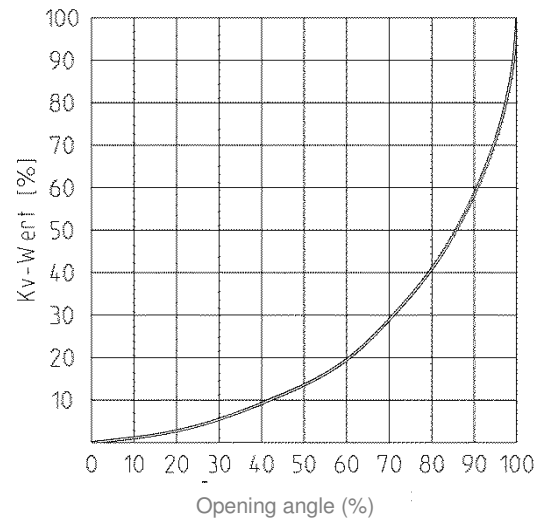
Pressure loss	DN10 d16	DN15 d20	DN20 d25	DN25 d32	DN32 d40	DN40 d50	DN50 d63	DN65 d75	DN80 d90	DN80 d110
0,001 bar	6,2	7,1	12,6	19,9	28,4	67	94,8	162,8	240,3	240,3
1 bar	198	225	400	630	900	2120	3000	5150	7600	7600

Angaben in l/min (PN16 Rohr)

Torque



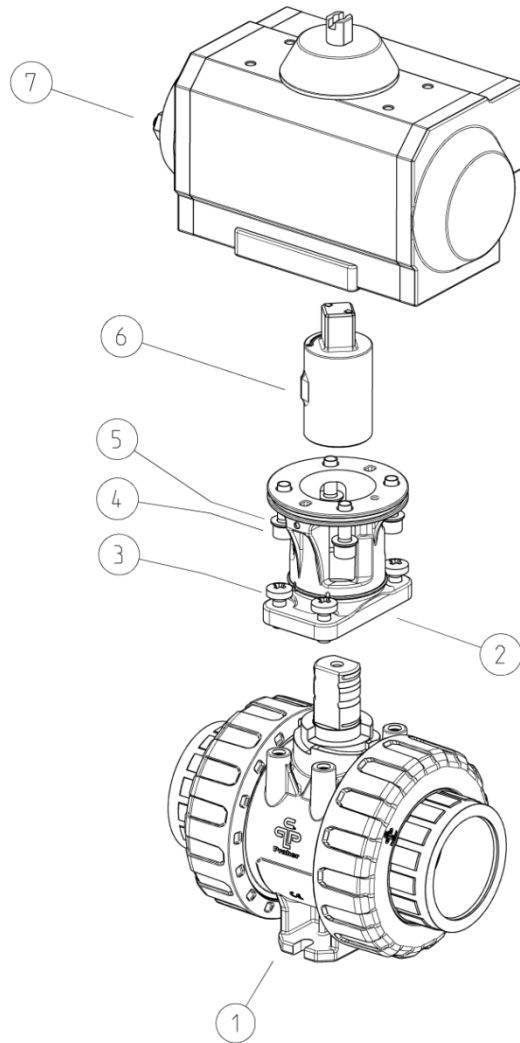
Flow characteristics



2 ball valve M1
with integrated Praher Labeling System

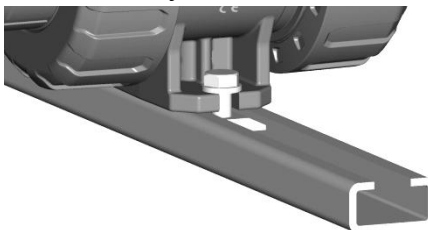
Exploded drawing:

- 01. ball valve
- 02. bracket (material: PA-GF)
- 03. screw
- 04. hexagon socket screw
- 05. toothed washer
- 06. coupling – actuator (material: PA-GF)
- 07. actuator

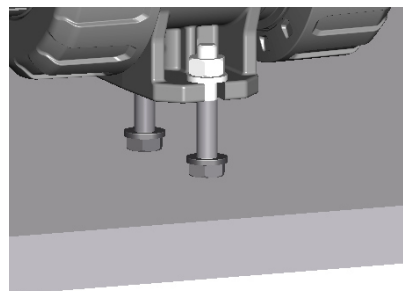


Bottom mounting stand – mounting possibilities:

- Assembly rail



- Plate



- Masonry / Concrete
 - Hanger screw and dowel required



2 ball valve M1 with integrated Praher Labeling System

Technical features pneumatic actuator

Description actuator

piston actuation with two opposed pistons, power transmission with tooth rack, seal elastic

Material actuator

- Body: aluminium anodized
- End caps: aluminium epoxy powder
- Screws and nuts: stainless steel

Ambient temperature: -20°C to +80°C

Control fluid

Filtered air according to PNEUROP/ISO class 4

Mounting

In every possible direction

Control function / control pressure

DA: double acting / max. 10 bar

SR: spring return / max. 8 bar

Rotation angle

90°; adjustment in both directions -10° to +10°

Installation

- actuator – valve: ISO 5211
- actuator – solenoid valve: NAMUR (VDI/VDE 3845)
- actuator – limit switch box: NAMUR (VDI/VDE 3845)

AIR CONSUMPTION (FULL CYCLE)

DA DOUBLE ACTING

actuator	UT05 DA	UT15 DA	UT17 DA
N. Lt.	0,22	0,41	0,55

AIR CONSUMPTION (FULL CYCLE)

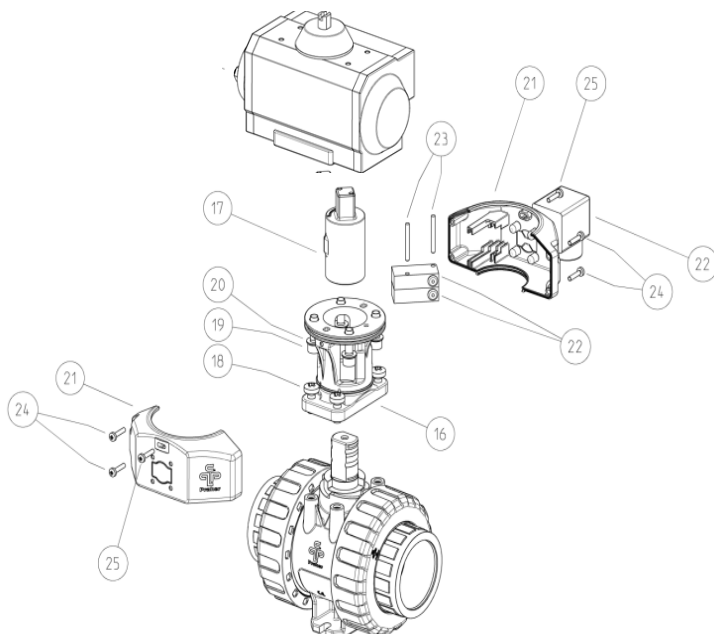
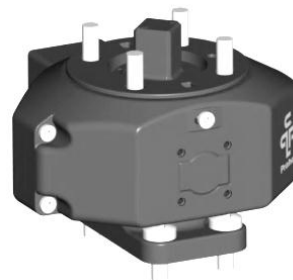
SR SPRING RETURN

actuator	UT05 SR	UT15 SR	UT17 SR	UT25 SR	UT30 SR
N. Lt.	0,13	0,18	0,25	0,48	0,65

2 ball valve M1 with integrated Praher Labeling System

ACCESSORIES:

Position feedback (bottom mounted) *- Mounted on adapter set -*



- 16. Bracket (material : PA-GF)
- 17. Coupling shaft
- 18. Screw
- 19. Hexagon socket screw
- 20. Toothed washer
- 21. Half-shells (material: ABS)
- 22. Limit switch
- 23. Pin
- 24. Screw
- 25. Locking screw for adjusting position feedback
- 26. Cover

Technical data position feedback:

Limit switch mechanical		
Type	(Ag-Ni) NO/NC*	(Au) NO*/NC*
Voltage max.	15-250V AC (15-30V DC)	5-250V AC (5-30V DC)
Current max.	100mA-5A	1mA-3A
Protection limit switch	IP67	
Protection DIN-plug	IP65	
Ambient temperature	Operating: -10°C bis +50°C	
Electrical wiring	NO	NC

* on request

Inductive position feedback: on request

2 ball valve M1 with integrated Praher Labeling System

Limit switch box (top mounted)

- *Mounted on actuator -*

General:

- Limit switch box with two mechanical switches
- Protection IP65
- Cable gland M20*1,5

Material:

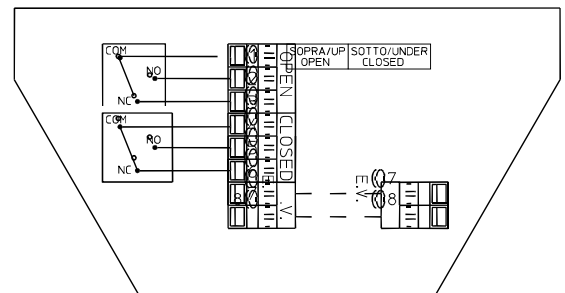
- Body: black polycarbonate
- Cover: clear polycarbonate
- Mounting bracket + screw: stainless steel
- Seals: EPDM

Voltage:

- 1-250 V

Current:

- 16 A (250V AC)
- 2,5 A (24 DC)



Solenoid Valve

General:

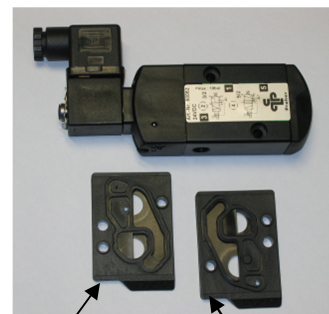
- Solenoid valve NAMUR with combined 5/2- and 3/2- ways function + standard coil
- Easy switch from 5/2- to 3/2-ways by turning around the sealing-plate
- Manual override as standard

Material:

- Body: aluminium anodized
- Piston: aluminium
- Seals: NBR
- Screws and spring: stainless steel

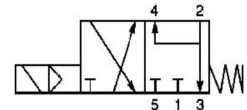
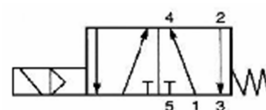
Voltage:

- 24 V DC (3W)
- 230 V AC (5VA)



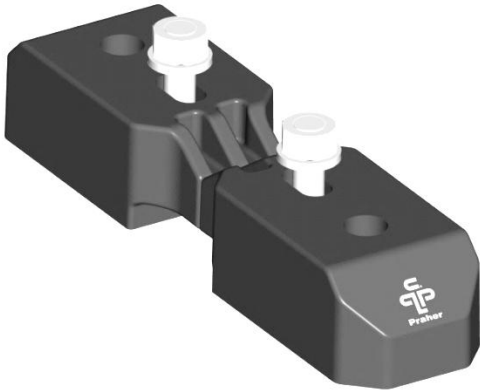
5/2 FUNCTION

3/2 FUNCTION



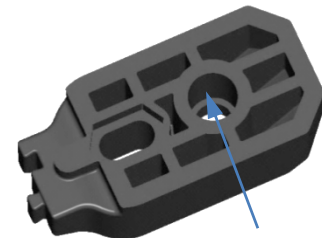
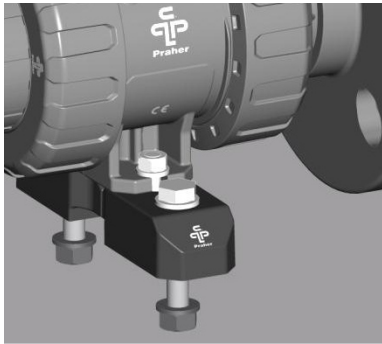
2 ball valve M1 with integrated Praher Labeling System

Clamping / spacing element:



Technical features:

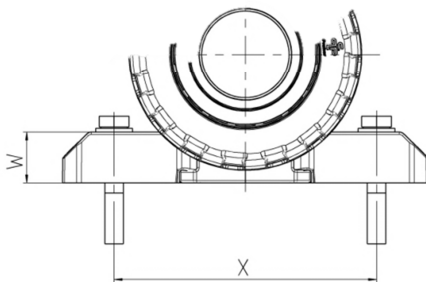
- Using for fixing as:
 - Clamping element
 - floors, walls, ceilings
 - plate
 - Spacing element
(screws additionally necessary)
 - for flange connection
- Bore for threaded bush



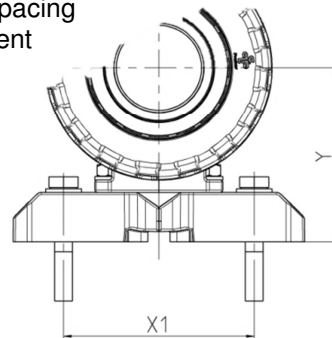
Bore for threaded bush

Dimensions:

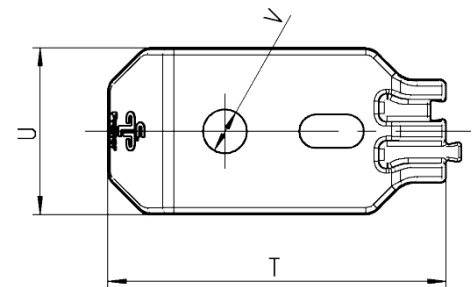
Use as clamping element



Use as spacing element



DN	10	15	20	25	32	40	50
d	16	20	25	32	40	50	63
T	54	54	54	65	65	65	65
U	25	25	25	32	32	32	32
V	6,5	6,5	6,5	8,5	8,5	8,5	8,5
W	16	16	16	22	22	22	22
X	90	90	94	107	109	114	119
X1	70	70	70	85	85	85	85
Y	49	49	56	65	73	78	86



Dimensions in mm