

Model 1216

Description

| | |
|-------------------------|-------------------------|
| Type | Safety and Relief valve |
| Connections | Threaded BSP / NPT |
| Rating | PN-40 |
| Material | Stainless steel 316 L |
| Temperature range | -10 to +350°C |
| Cryogenic service until | -196°C |

Requirements

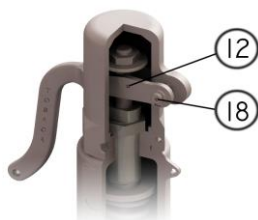
| | |
|-------------|--|
| Calculation | EN-4126-1 / 7 |
| Design | EN-12516-1, EN-4126-1 / 7 DIN 259 and ANSI B2.1 |
| Materials | EN |
| Inspection | EN-4126-1 / 7 |

Construction and materials

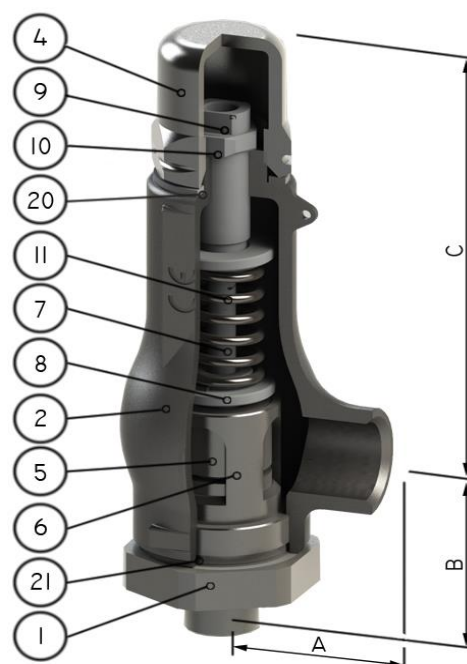
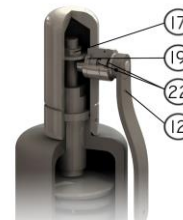
| Item | Description | Material | |
|------|--------------------|--------------|------------|
| | | Standard | Cryogenic |
| 1 | Nozzle | A351 CF-3M | A351 CF-3M |
| 2 | Body | A351 CF-3M | A351 CF-3M |
| 4 | Cap | A351 CF-8 | A351 CF-8 |
| 5 | Disc | AISI-316L | AISI-316L |
| 6 | Guide | A351 CF-3M | A351 CF-3M |
| 7 | Push Road | AISI-316L | AISI-316L |
| 8 | Spring Button | AISI-303 | AISI-303 |
| 9 | Ajusting Screw | AISI-303 | AISI-303 |
| 10 | Tensor Nut | AISI-303 | AISI-303 |
| 11 | Spring | AISI-302 | 17 / 7PH |
| 12 | Lever | A351 CF-8 | A351 CF-8 |
| 17 | Release nut | AISI-316 | AISI-316 |
| 18 | Lever axis | AISI-303 | AISI-303 |
| 19 | Packing lever axis | AISI-303 | AISI-303 |
| 20 | Gasket | PTFE | PTFE |
| 21 | Gasket | PTFE | PTFE |
| 22 | Gasket | Viton | PTFE |
| 28 | Soft seat | Viton / PTFE | Metal |

 Recommended spare parts

Lifting device



Sealed packing lever



Soft seat



Technical information

| | |
|------------------------|--|
| Applications | Steam, gases, vapours and liquids |
| Min. Set pressure | 0,2 barg |
| Overpressure | 10% |
| Blowdown | Gases 10%, liquids 20% |
| Tolerance Set pressure | ± 3% |
| Discharge coefficients | k= 0,55 for gases k= 0,48 for liquids |

Dimensions

| Inlet | Outlet | Orifice | Area (mm ²) | A (mm) | B (mm) | C (mm) | Weight (kg) |
|--------|--------|---------|----------------------------|-----------|-----------|-----------|----------------|
| 1/2" | 3/4" | 13 | 133 | 45 | 57 | 155 | 2,2 |
| 1/2" | 1" | 13 | 133 | 45 | 57 | 155 | 2,2 |
| 3/4" | 1" | 14 | 154 | 45 | 57 | 155 | 2,2 |
| 1" | 1" | 16 | 201 | 45 | 60 | 155 | 2,2 |
| 1" | 1 1/4" | 16 | 201 | 45 | 61 | 155 | 2,3 |
| 1" | 2" | 22 | 380 | 62 | 87 | 234 | 4,5 |
| 1 1/4" | 1 1/4" | 18 | 254 | 45 | 62 | 155 | 2,4 |
| 1 1/2" | 2" | 28 | 616 | 62 | 89 | 234 | 4,6 |
| 2" | 2" | 32 | 804 | 62 | 93 | 234 | 5,1 |

Model 1216 HP

Description

| | |
|-------------------------|-------------------------|
| Type | Safety and Relief valve |
| Connections | Threaded BSP / NPT |
| Rating | PN-100, 250&400 |
| Material | Stainless steel 316 L |
| Temperature range | -10 to +300° C |
| Cryogenic service until | -196°C |

Requirements

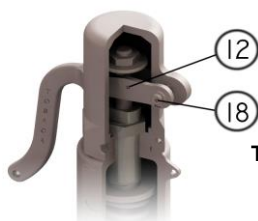
| | |
|-------------|--|
| Calculation | EN-4126-1 / 7 |
| Design | EN-12516-1, EN-4126-1 / 7 DIN 259 and ANSI B2.1 |
| Materials | EN |
| Inspection | EN-4126-1 / 7 |

Construction and materials

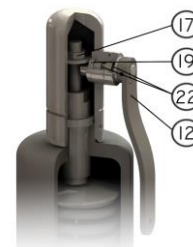
| Item | Description | Material | |
|------|--------------------|-----------------|------------|
| | | Standard | Cryogenic |
| 1 | Nozzle | AISI-316 | AISI-316 |
| 2 | Body | A351 CF-3M | A351 CF-3M |
| 4 | Cap | A351 CF-8 | A351 CF-8 |
| 5 | Disc | 17-4 PH | 17-4PH |
| 6 | Guide | A351 CF-3M | A351 CF-3M |
| 7 | Push Road | AISI-316L | AISI-316L |
| 8 | Spring Button | AISI-303 | AISI-303 |
| 9 | Ajusting Screw | AISI-303 | AISI-303 |
| 10 | Tensor Nut | AISI-303 | AISI-303 |
| 11 | Spring | INCONEL X750 | 17-7 PH |
| 12 | Lever | A351 CF-8 | A351 CF-8 |
| 17 | Release nut | AISI-316 | AISI-316 |
| 18 | Lever axis | AISI-303 | AISI-303 |
| 19 | Packing lever axis | AISI-303 | AISI-303 |
| 20 | Gasket | PTFE | PTFE |
| 21 | Gasket | GRAPHITE + S.S. | |
| 22 | Gasket | Viton | PTFE |

 Recommended spare parts

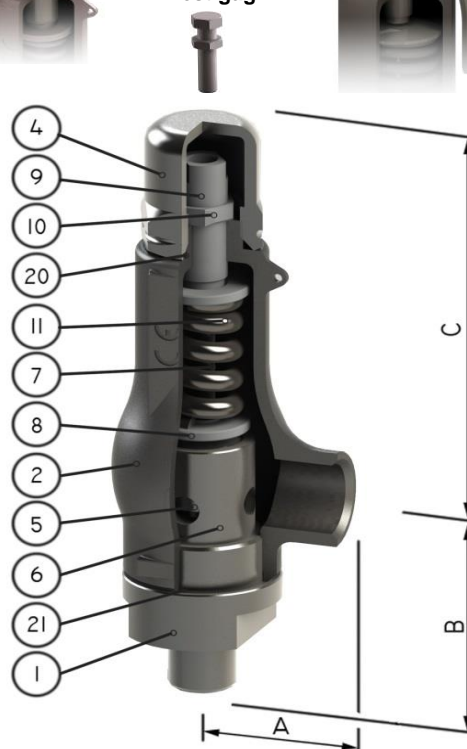
Lifting device



Sealed packing lever



Test gag



Technical information

| | |
|------------------------|--|
| Applications | Steam, gases, vapours and liquids |
| Min. Set pressure | 0,2 barg |
| Max. Set pressure | 300 barg |
| Overpressure | 10% |
| Blowdown | Gases 10%, liquids 20% |
| Tolerance Set pressure | ± 3% |
| Discharge coefficients | k= 0,5 for gases k= 0,4 for liquids |

Dimensions

| Inlet | Outlet | Orifice | Area (mm ²) | A (mm) | B (mm) | C (mm) | Weight (kg) |
|-------------------|--------|---------|----------------------------|-----------|-----------|-----------|----------------|
| PN100 PN40 | | | | | | | |
| 1" | 2" | 16 | 201 | 62 | 100 | 235 | 5 |
| 1 1/4" | 2" | 18 | 254 | 62 | 100 | 235 | 5 |
| 1 1/2" | 2" | 20 | 314 | 62 | 100 | 235 | 6 |
| 2" | 2" | 22 | 380 | 62 | 100 | 235 | 6,3 |
| PN250 PN40 | | | | | | | |
| 1/2" | 3/4" | 9 | 64 | 45 | 72 | 155 | 3 |
| 3/4" | 3/4" | 9 | 64 | 45 | 72 | 155 | 3 |
| 3/4" | 1" | 9 | 64 | 45 | 72 | 155 | 3 |
| 1" | 1" | 9 | 64 | 45 | 77 | 155 | 3 |
| PN400 PN40 | | | | | | | |
| 1/2" | 3/4" | 6 | 28 | 45 | 72 | 155 | 3 |
| 3/4" | 3/4" | 6 | 28 | 45 | 72 | 155 | 3 |
| 3/4" | 1" | 6 | 28 | 45 | 72 | 155 | 3 |
| 1" | 1" | 6 | 28 | 45 | 77 | 155 | 3 |

Model 1216 C

Description

| | |
|-------------------|--------------------------|
| Type | Safety and Relief valve |
| Connections | Clamp / BSP |
| Rating | PN-10 |
| Material | Stainless steel 316 L SS |
| Temperature range | -10 to +350°C |

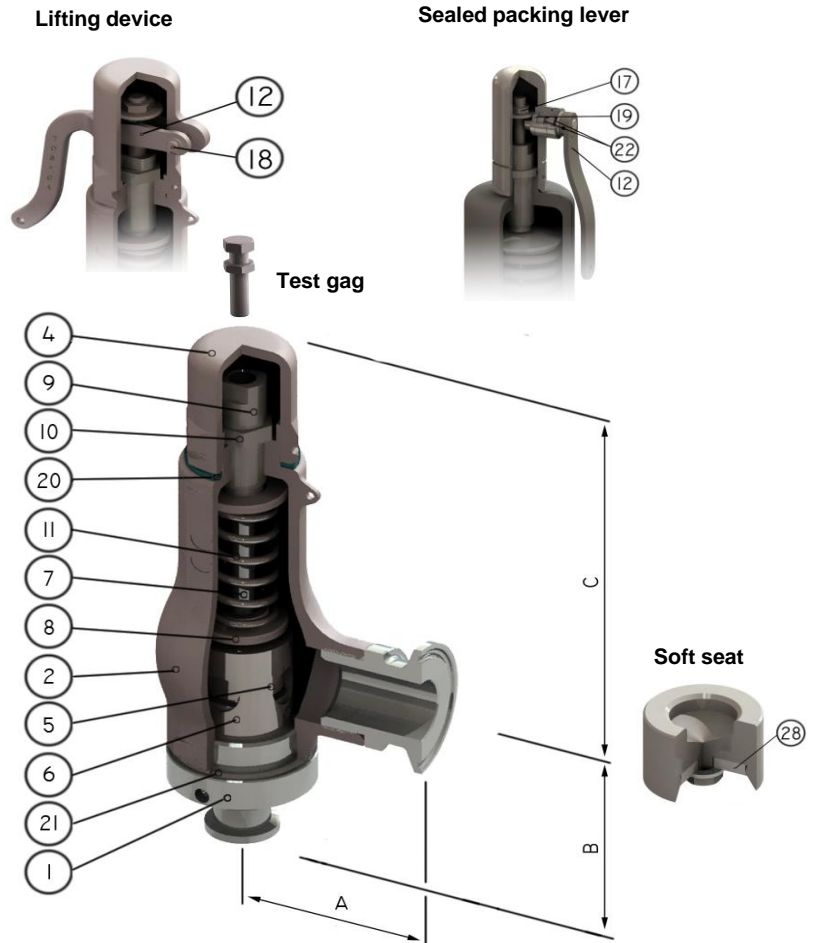
Requirements

| | |
|-------------|--|
| Calculation | EN-4126-1 / 7 ISO-2852 |
| Design | EN-12516-1, EN-4126-1 / 7 DIN 259 & ANSI B2.1 |
| Materials | EN |
| Inspection | EN-4126-1 / 7 |

Construction and materials

| Item | Description | Material |
|------|--------------------|--------------|
| 1 | Nozzle | A351 CF-3M |
| 2 | Body | A351 CF-3M |
| 4 | Cap | A351 CF-8 |
| 5 | Disc | AISI-316L |
| 6 | Guide | A351 CF-3M |
| 7 | Push Road | AISI-316L |
| 8 | Spring Button | AISI-303 |
| 9 | Ajusting Screw | AISI-303 |
| 10 | Tensor Nut | AISI-303 |
| 11 | Spring | AISI-302 |
| 12 | Lever | A351 CF-8 |
| 17 | Release nut | AISI-316 |
| 18 | Lever axis | AISI-303 |
| 19 | Packing lever axis | AISI-303 |
| 20 | Gasket | PTFE |
| 21 | Gasket | PTFE |
| 22 | Gasket | Viton |
| 28 | Soft seat | Viton / PTFE |

 Recommended spare parts

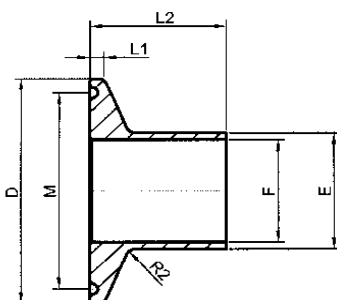


Technical information

| | |
|------------------------|--|
| Applications | Steam, gases, vapours, liquids |
| Min. Set pressure | 0,2 barg |
| Overpressure | 10% |
| Blowdown | Gases 10%, liquids 20% |
| Tolerance Set pressure | ± 3% |
| Discharge coefficients | k= 0,55 for gases k= 0,48 for liquids |

Dimensions

| Inlet | Outlet | Orifice | Area (mm ²) | A (mm) | B (mm) | C (mm) | Weight (kg) |
|-------|--------|---------|-------------------------|--------|--------|--------|-------------|
| 15 | 25 | 9,5 | 71 | 73 | 65 | 155 | 2,4 |
| 20 | 25 | 15 | 176,6 | 73 | 65 | 155 | 2,4 |
| 25 | 25 | 18 | 254 | 73 | 67 | 155 | 2,8 |
| 40 | 40 | 32 | 804 | 90 | 98 | 234 | 8,2 |
| 15 | 1" | 9,5 | 71 | 45 | 65 | 155 | 2 |
| 20 | 1" | 15 | 176,6 | 45 | 65 | 155 | 2 |
| 25 | 1" | 18 | 254 | 45 | 67 | 155 | 2,2 |
| 40 | 2" | 32 | 804 | 62 | 98 | 234 | 8,2 |



Clamp ISO 2852

| | D | M | E | L1 | L2 |
|------------|------|------|------|------|------|
| 15 | 25 | 19 | 12,7 | 2,85 | 12,7 |
| 20 | 25 | 19 | 19 | 2,85 | 12,7 |
| 1"(25) | 50,5 | 43,5 | 25,6 | 2,85 | 21,5 |
| 1 1/2"(38) | 50,5 | 43,5 | 38,6 | 2,85 | 21,5 |

Model 1216 B

Description

| | |
|-------------------|--|
| Type | Safety and Relief valve |
| Connections | PN 16, PN 40, 150#, 300# Threaded BSP / NPT |
| Rating | PN-40 |
| Material | Stainless steel 316 L SS |
| Temperature range | -28 to +350°C |

Requirements

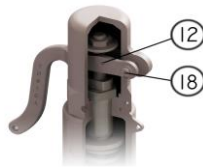
| | |
|-------------|--|
| Calculation | EN-4126-1 / 7 |
| Design | EN-12516-1, EN-4126-1 / 7 DIN 259, ANSI B2.1 and ANSI B16.5 |
| Materials | EN |
| Inspection | EN-4126-1 / 7 |

Construction and materials

| Item | Description | Material |
|------|--------------------|-----------------|
| 1 | Nozzle | A 351 CF 3M |
| 2 | Body | A 351 CF 3M |
| 4 | Cap | A 351 CF-8 |
| 5 | Disc | AISI-316L |
| 6 | Guide | A 351 CF 3M |
| 7 | Push Road | AISI-316L |
| 8 | Spring Button | AISI-303 |
| 9 | Ajusting Screw | AISI-303 |
| 10 | Look nut | AISI-303 |
| 11 | Spring | AISI-302 |
| 12 | Lever | A 351 CF-8 |
| 17 | Release nut | AISI-316 |
| 18 | Lever axis | AISI-303 |
| 19 | Packing lever axis | AISI-303 |
| 20 | Gasket | PTFE |
| 21 | Gasket | GRAPHITE + S.S. |
| 22 | Gasket | Viton |
| 28 | Soft seat | Viton / PTFE |

Recommended spare parts

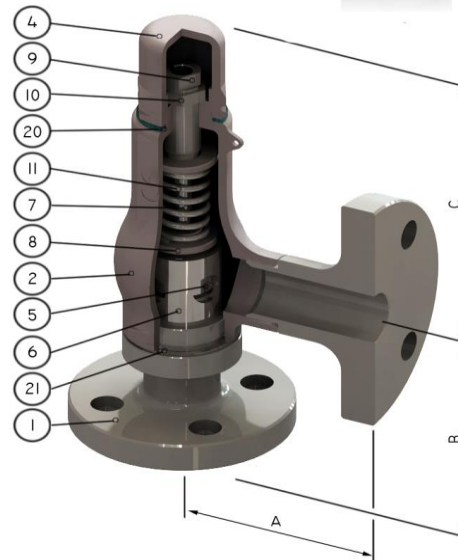
Lifting device



Sealed packing lever



Test gag



Soft seat



Technical information

| | |
|------------------------|--|
| Applications | Steam, gases, vapours and liquids |
| Min. Set pressure | 0,2 barg |
| Overpressure | 10% |
| Blowdown | Gases 10%, liquids 20% |
| Tolerance Set pressure | ± 3% |
| Discharge coefficients | k= 0,55 for gases k= 0,48 for liquids |

Dimensions

| ANSI | Inlet | Outlet | Orif. | Area | A | A | B | C | weight |
|------|---------|---------|-------|--------------------|------|------|------|------|--------|
| | ANSI150 | 150 BSP | | (mm ²) | ANSI | BSP | (mm) | (mm) | (kg) |
| | RF | NPT | (mm) | | (mm) | (mm) | (mm) | (mm) | |
| | 1/2" | 1" o 1" | 13 | 133 | 70 | 45 | 90 | 155 | 3 |
| | 3/4" | 1" o 1" | 14 | 154 | 70 | 45 | 90 | 155 | 3,2 |
| | 1" | 1" o 1" | 16 | 201 | 70 | 45 | 90 | 155 | 3,5 |

| EN | PN 16 | PN 16 BSP | | | | | | | |
|----|-------|-----------|------|-----|------|------|------|------|-----|
| | PN 40 | NPT | | | | | | | |
| | | | (mm) | | (mm) | (mm) | (mm) | (mm) | |
| | 15 | 25 o 1" | 13 | 133 | 70 | 45 | 90 | 155 | 3 |
| | 20 | 25 o 1" | 14 | 154 | 70 | 45 | 90 | 155 | 3,2 |
| | 25 | 25 o 1" | 16 | 201 | 70 | 45 | 90 | 155 | 3,5 |