



VB-60

2-Way 3-Pieces Full(FB) or Reduced(RB) Bore Floating Ball Valve Working Pressure 100 bar (1500 PSI)

With a smooth and safe movement, VB-60 TECVAL floating ball valve is designed to work with liquids under either high pressure or moderate vacuum service. To be used in numerous applications, they are manufactured in several sizes, connections and alloys.



Features

- Floating ball.
- Three pieces to allow a full disassembling.
- Full Bore (FB) or Reduced Bore (RB).
- Smooth operating.
- Easy cleaning and maintenance.
- No ejectable stem design.
- Anti-leak stem with double o-ring seal.
- 100% tested.

Options

- Automation through electrical actuator. **A**
- Automation through pneumatic actuator. **H**
- Prepared for a quick automation (ISO 5211). **T**
- VIC Grooved end connections. **O**
- Handle safety lockout. **W**
- O-ring seals available in several materials.

Technical data

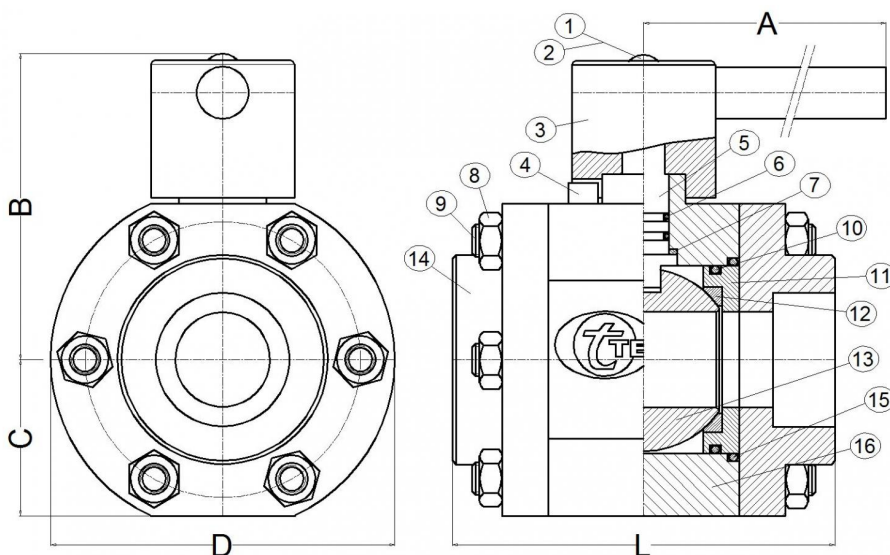
Max. Pressure	100 bar (1500 PSI)				
Temperatures	-20°C/200°C (-4°F/392°F)				
Dimensions	2 1/2"(FB)	3"(RB)	3"(FB)	4"(RB)	4"(FB)
A	600/2	600/2	600/2	600/2	600/2
B	160	160	175	175	190
C	80	80	100	100	110
D	165	165	200	200	230
L	200	200	230	230	265
Orifice Size	65	65	80	80	100
Maximum Cv	700	700	1200	1200	2100

Order codes

SW	2500	2505	2510	2515	2520
BW	2501	2506	2511	2516	2521
BSP	2502	2507	2512	2517	2522
NPT	2503	2508	2513	2518	2523



* Dimensions in mm



Materials

Nº Part	AISI-316L A4	Duplex AD	SuperDuplex AS	Special alloys
1 Set screw	AISI-316 (1.4401)	AISI-316 (1.4401)	AISI-316 (1.4401)	AISI-316 (1.4401)
2 Id. plate	PVC	PVC	PVC	PVC
3 Handle	AISI-316L (1.4404)	AISI-316L (1.4404)	AISI-316L (1.4404)	AISI-316L (1.4404)
4 Stop Pin	AISI-316 (1.4401)	AISI-316 (1.4401)	AISI-316 (1.4401)	AISI-316 (1.4401)
5 Stem	AISI-316L (1.4404)	Duplex (1.4462)	Superduplex (1.4410/ 1.4501)	Special alloy
6 Stem o-ring	EPDM	EPDM	EPDM	EPDM
7 Stem bearing	Delrin	Delrin	Delrin	Delrin
8 Nut	AISI-316 (1.4401)	AISI-316 (1.4401)	AISI-316 (1.4401)	AISI-316 (1.4401)
9 Stud	AISI-316 (1.4401)	AISI-316 (1.4401)	AISI-316 (1.4401)	AISI-316 (1.4401)
10 Seat o-ring	EPDM	EPDM	EPDM	EPDM
11 Seat carrier	AISI-316L (1.4404)	Duplex (1.4462)	Superduplex (1.4410/ 1.4501)	Special alloy
12 Seat	Reinforced PTFE	Reinforced PTFE	Reinforced PTFE	Reinforced PTFE
13 Ball	AISI-316L (1.4404)	Duplex (1.4462)	Superduplex (1.4410/ 1.4501)	Special alloy
14 End connection	AISI-316L (1.4404)	Duplex (1.4462)	Superduplex (1.4410/ 1.4501)	Special alloy
15 Body o-ring	EPDM	EPDM	EPDM	EPDM
16 Body	AISI-316L (1.4404)	Duplex (1.4462)	Superduplex (1.4410/ 1.4501)	Special alloy

Special alloys

Manufactured in AISI-316Ti (1.4571) **A6**, AISI-904L (1.4539) **A9**, 254-SMO (1.4547) **AV**, Alloy 400 (2.4360) **MO**, Alloy 625 (2.4856) **IN**, Alloy 825 (2.4858) **CO**, Titanium Gr.2 (3.7034) **TI**, Hastelloy C-276 (2.4819) **HA**.

Ordering information

References are formed by three parts:

Valve Code Look for it in the order codes chart on the previous page.

Option/s If required, add the code/s from the options section on the previous page (in alphabetical order).

Material Look for the code on the materials chart.

Example:

Full Bore Floating Ball Valve VB-60 3"SW AISI-316L with pneumatic actuator:

2510 H A4 The reference required to place the order is **2510HA4**.

Actuators

Upon request, ball valves VB-60 can be delivered with pneumatic actuators, either double acting or spring return. The actuators can be worked by standarised or bottled air. Electrical actuators of 24V, 115V and 230V can also be assembled.

Tests

100% tested in accordance to API STANDARD 598. Each valve is tested to check the leakage in the seats and packing. Upon request, the corresponding materials and test certificates can be delivered with the valve.

Maintenance

Our VB-60 valves are designed to be operated in a fully open or fully closed position.

Valves with long no-working period may have a harder initial operating torque.

Elastomers & Seats

O-ring seals can be made of different materials: Nitrile **B** or Neopren **N** considering the working conditions and fluid of the valve.



TECVAL S.L.
C/Berlín, 1 Nave 4
Pol.Can Torrella
08233-VACARISSES
Barcelona - SPAIN
Tel: +34 938 280 055
tecval@tecval.es