



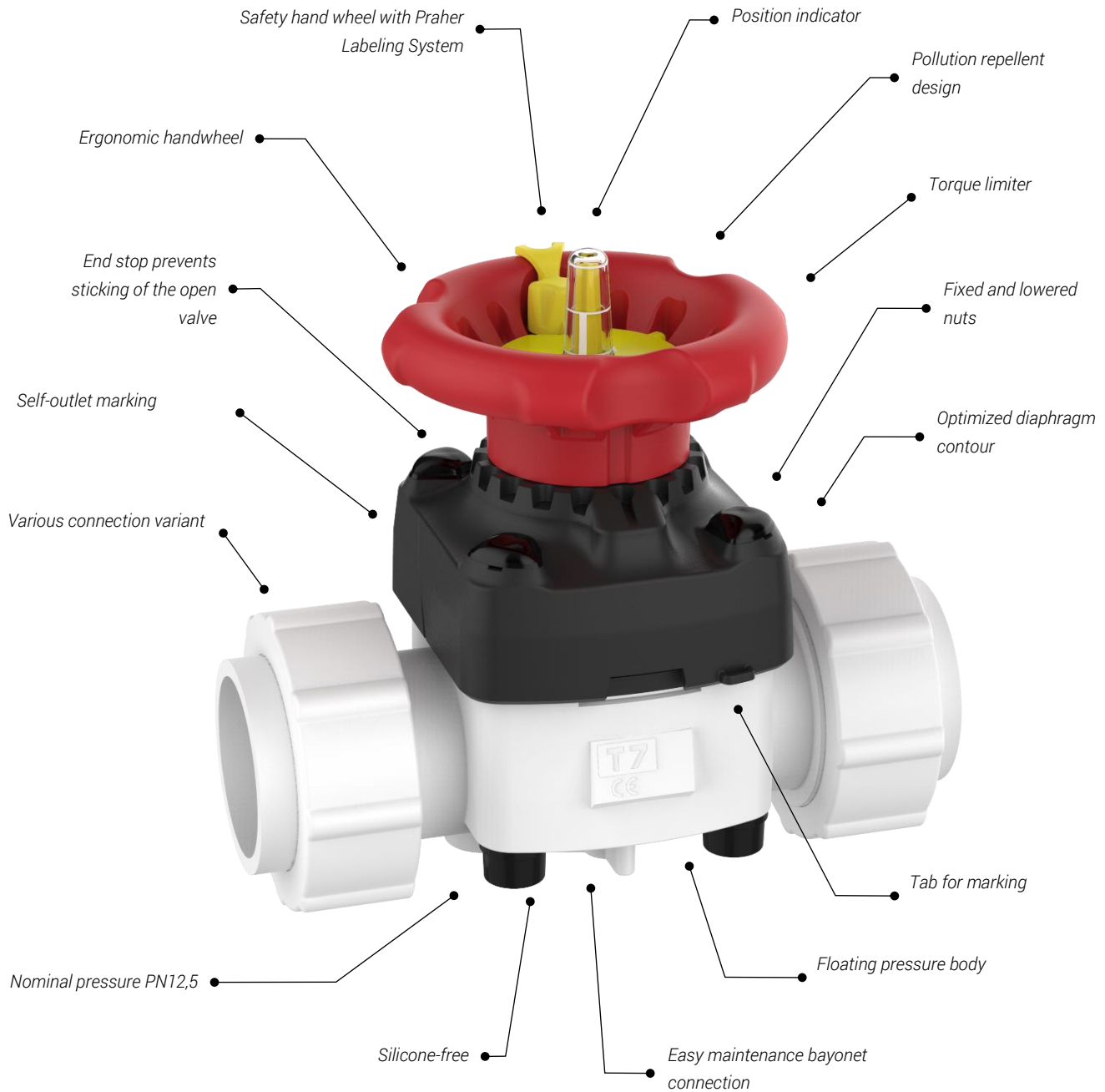
Diaphragm Valve

T7

PVDF

DATASHEET

Diaphragm Valve T7



Overview

General			
Materials	Body material	PVDF	
	Seal material	FPM	
	Diaphragm	EPDM+PTFE / FPM	
Dimensions	DN15 – DN50 d20 – d63 1/2" – 2"		
Connection Variants	PVDF spigot	metric	SDR21 / PN16
	PVDF fixed flange	DIN / ANSI / JIS	PN16
	<u>Inserts for union:</u>		
	PVDF fusion socket	metric	
	PVDF fusion spigot	metric	SDR21 / PN16
	PE100 Fusion spigot	metric	SDR11 / PN16
	PE100 Fusion spigot long	metric	SDR11 / PN16
	PE100 Fusion socket	metric	
Operating Variants	Handwheel Torque limited		
	Handwheel		
Operating Pressure	DN15 – DN50 Diaphragm EPDM + PTFE	PN12,5	
	DN15 – DN50 DiaphragmFPM	PN10	

Table of Contents



Technical Data

Page 5



Manually Operated Diaphragm Valve

Page 7

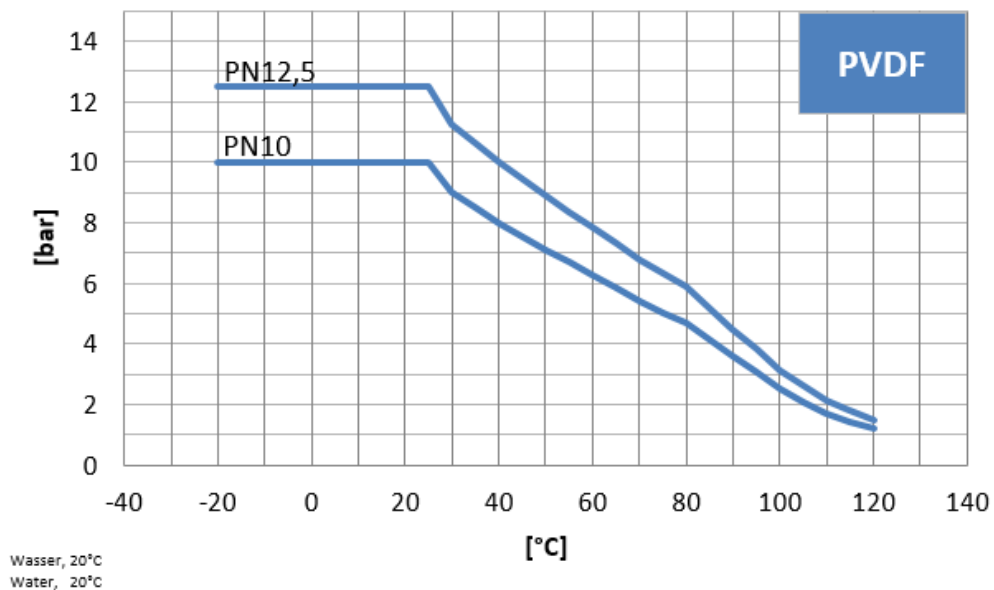


Accessories / Spare Parts

Page 16

Technical Data

Pressure-Temperature-Diagram



The values of the pressure-temperature diagram are based on a service life of 25 years at static pressure load with water at 20°C

Torque at Handwheel to Reach Closed Position

Dimension	Torque Handwheel [Nm]	
	EPDM – FPM	EPDM/PTFE
DN 15/20	3	5
DN25	4	5
DN32/40	12	16
DN50	16	19

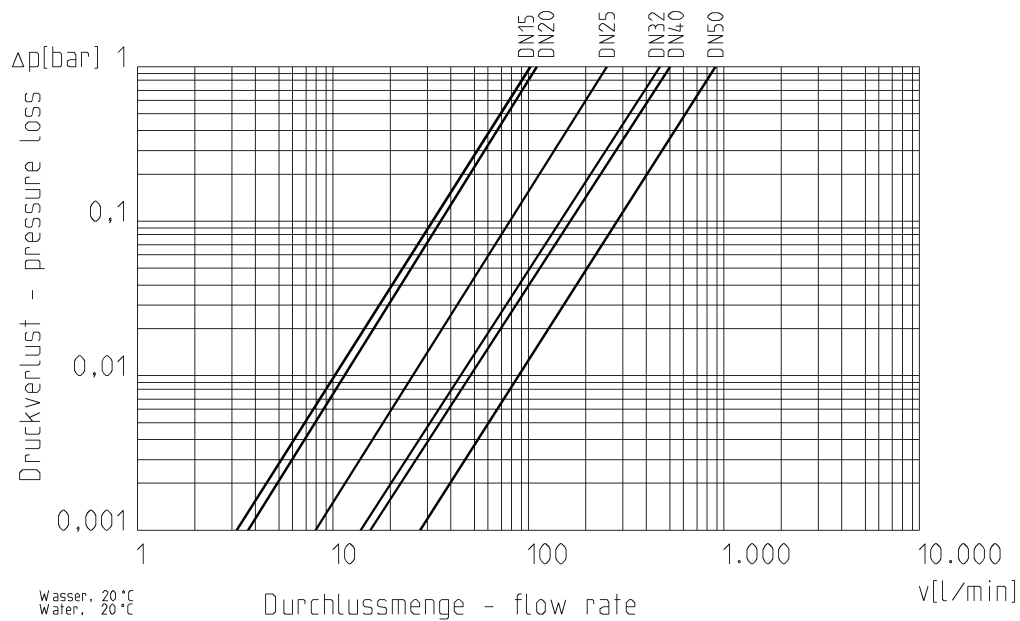
Torque on the Connecting Screws of the Upper and Lower Part

Screw Torque	
Dimension	[Nm]
DN 15/20	4
DN25	5
DN32/40	10
DN50	13

For further information and notes, see operating instructions.

Technical Data

Flow - Pressure Drop

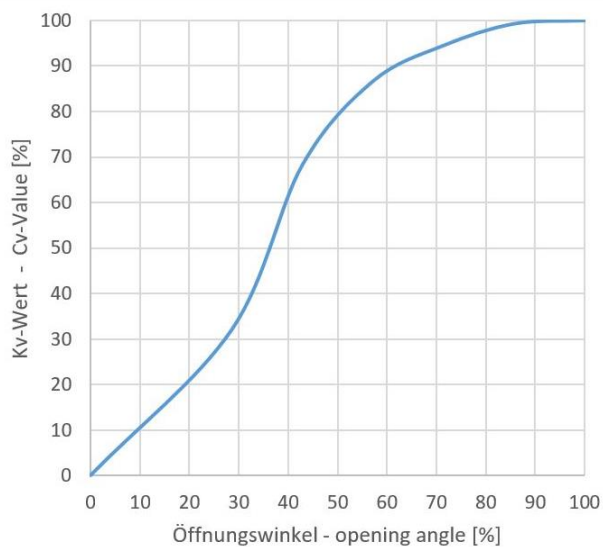


CV-Value-Table

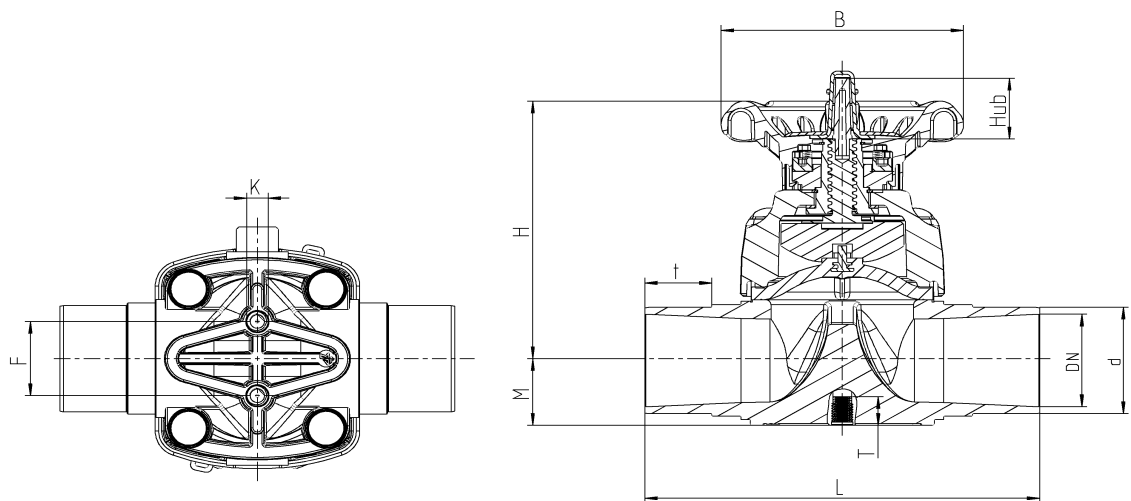
Pressure Loss	DN15 d20	DN20 d25	DN25 d32	DN32 d40	DN40 d50	DN50 d63
0,001 bar	3,2	3,6	7,9	14,2	15,8	27,8
1 bar	102	114	250	450	500	880

Figures in l/min (PN10 pipe)

Flow characteristics



Dimensions Manually Operated Valve



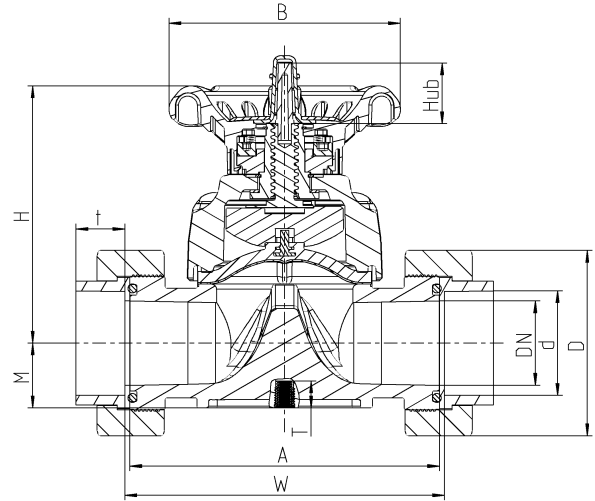
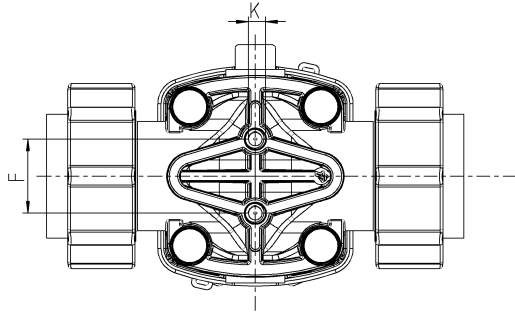
Connection Variant

PVDF Fusion Spigot metric

DN	15	20	25	32	40	50
d	20	25	32	40	50	63
Inch	1/2"	3/4"	1"	1 1/4"	1 1/2"	2"
H	87	89	96	135	140	153
B	85	85	85	138	138	138
F	25	25	25	44	44	44
K	M6	M6	M6	M8	M8	M8
Hub	13	13	15	22	22	30
t	36	36	36	36	48	54,5
L	133	144	154	174	194	224
M	18,6	16,5	20	25,5	32	38,5

(Dimensions in mm)

Dimensions Manually Operated Valve



Connection Variant

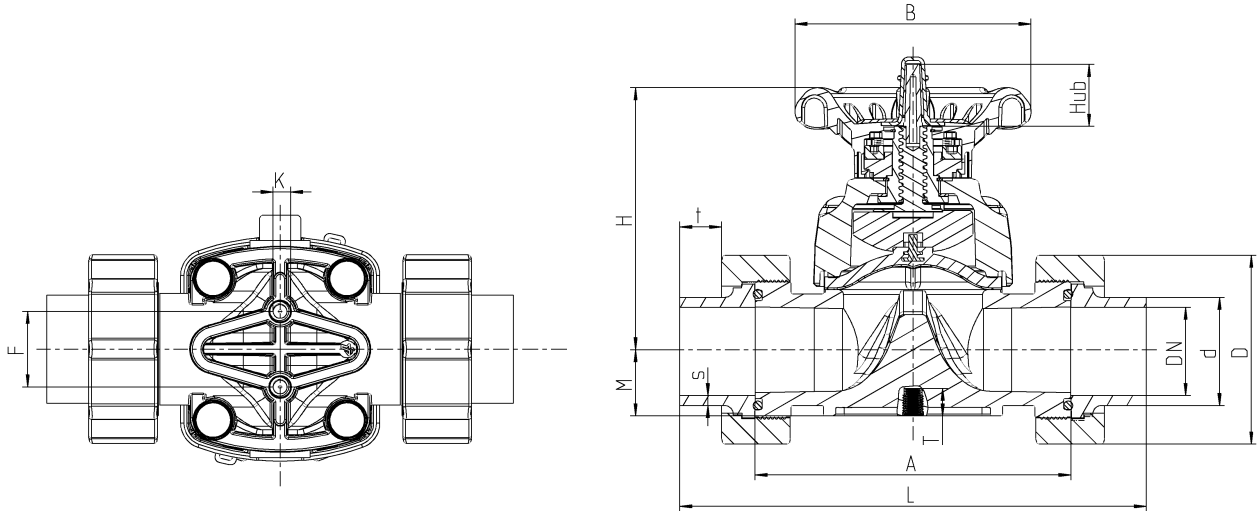
PVDF Fusion socket metric via Union

DN	15	20	25	32	40	50
d	20	25	32	40	50	63
Inch	1/2"	3/4"	1"	1 1/4"	1 1/2"	2"
H	87	89	96	135	140	153
B	85	85	85	138	138	138
F	25	25	25	44	44	44
K	M6	M6	M6	M8	M8	M8
Hub	13	13	15	22	22	30
t	16	17,5	19	22	24	29
A	90	108	116	134	154	184
D	47,5	57	63,5	77	88	108
M	18,6	16,5	20	25,5	32	38,5
W	96	114	123	139	161	190

* on request

(Dimensions in mm)

Dimensions Manually Operated Valve



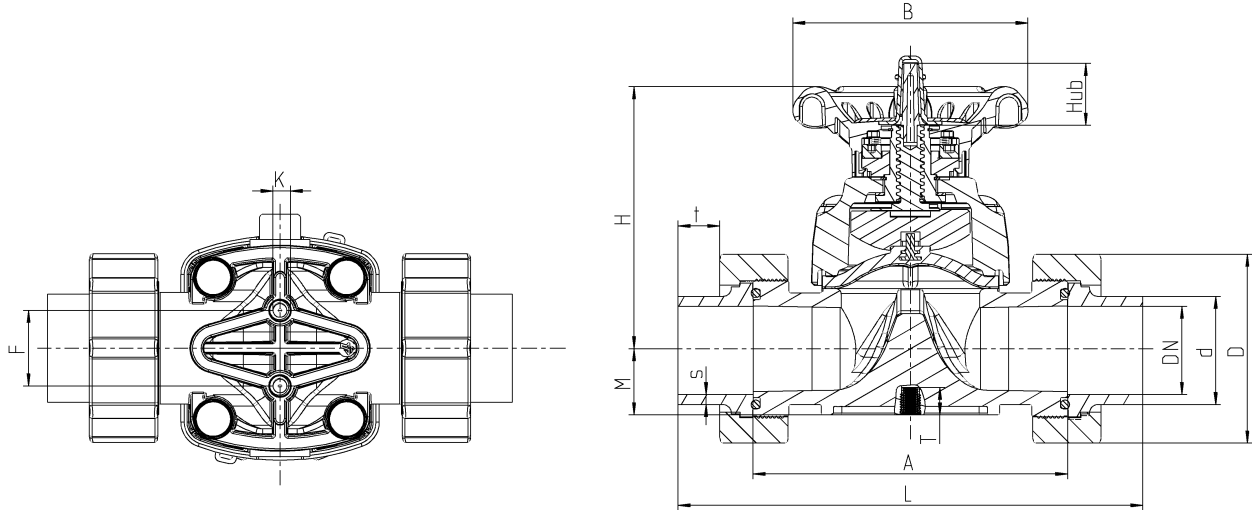
Connection Variant

PVDF Fusion spigot metric via union

DN	15	20	25	32	40	50
d	20	25	32	40	50	63
Inch	1/2"	3/4"	1"	1 1/4"	1 1/2"	2"
H	87	89	96	135	140	153
B	85	85	85	138	138	138
F	25	25	25	44	44	44
K	M6	M6	M6	M8	M8	M8
Hub	13	13	15	22	22	30
t	39	38	42	41	43,5	43
L	197	221	235	257	284	319
M	18,6	16,5	20	25,5	32	38,5
A	90	108	116	134	154	184
D	47,5	57	63,5	77	88	108
s	2	2	2,5	2,5	3,2	3,4

(Dimensions in mm)

Dimensions Manually Operated Valve



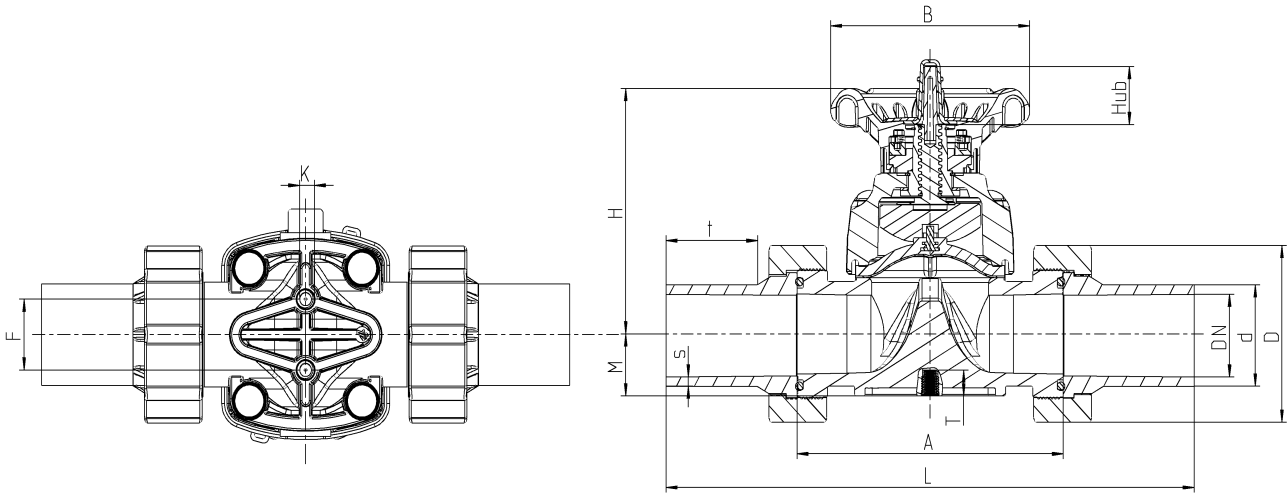
Connection Variant

PE Fusion spigot metric via Union

DN	15	20	25	32	40	50
d	20	25	32	40	50	63
Inch	1/2"	3/4"	1"	1 1/4"	1 1/2"	2"
H	87	89	96	135	140	153
B	85	85	85	138	138	138
F	25	25	25	44	44	44
K	M6	M6	M6	M8	M8	M8
Hub	13	13	15	22	22	30
t	14	16	18	15	29	26
L	150	180	194	192	240	272
M	18,6	16,5	20	25,5	32	38,5
A	90	108	116	134	154	184
D	47,5	57	63,5	77	88	108
s	2,1	2,5	3,1	3,7	5,2	5,8

(Dimensions in mm)

Dimensions Manually Operated Valve



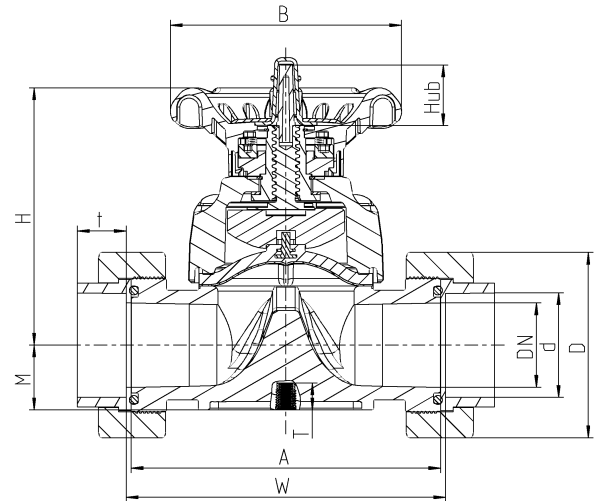
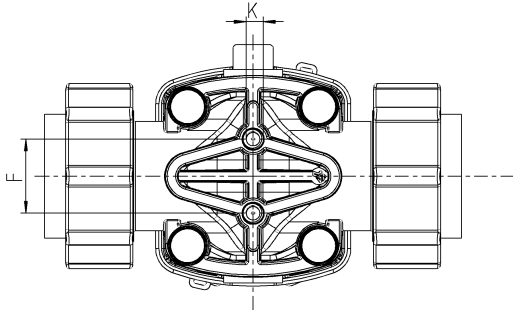
Connection Variant

PE Fusion spigot long metric via Union

DN	15	20	25	32	40	50
d	20	25	32	40	50	63
Inch	1/2"	3/4"	1"	1 1/4"	1 1/2"	2"
H	87	89	96	135	140	153
B	85	85	85	138	138	138
F	25	25	25	44	44	44
K	M6	M6	M6	M8	M8	M8
Hub	13	13	15	22	22	30
t	46	47	71,5	55	59,5	63
L	214	245	286	292	323	365
M	18,6	16,5	20	25,5	32	38,5
A	90	108	116	134	154	184
D	47,5	57	63,5	77	88	108
s	3	3	2,9	3,7	4,6	5,8

(Dimensions in mm)

Dimensions Manually Operated Valve



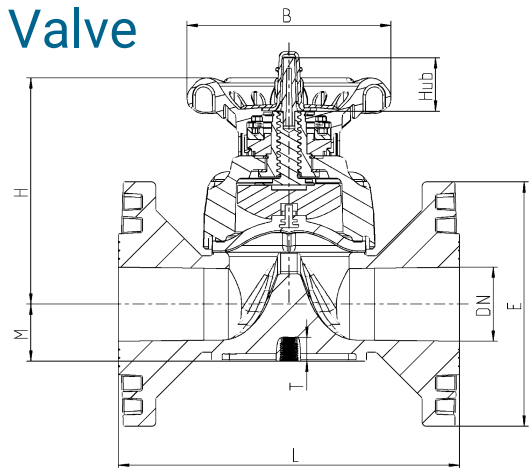
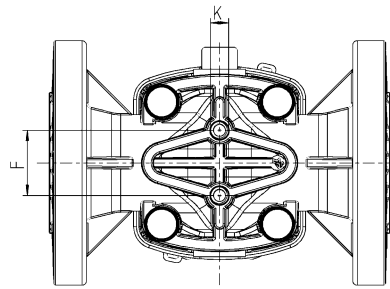
Connection Variant

PE Fusion socket metric via Union

DN	15	20	25	32	40	50
d	20	25	32	40	50	63
Inch	1/2"	3/4"	1"	1 1/4"	1 1/2"	2"
H	87	89	96	135	140	153
B	85	85	85	138	138	138
F	25	25	25	44	44	44
K	M6	M6	M6	M8	M8	M8
Hub	13	13	15	22	22	30
t	16	17,5	19,5	22	25	29
W	95	116	126	146	173	209
M	18,6	16,5	20	25,5	32	38,5
A	90	108	116	134	154	184
D	47,5	57	63,5	77	88	108

(Dimensions in mm)

Dimensions Manually Operated Valve

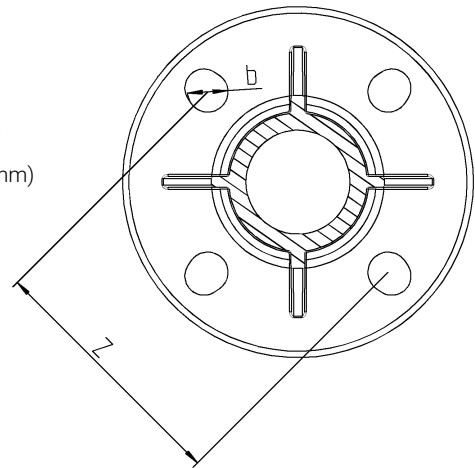


Connection Variant

PVDF Fixflansch DIN-ANSI-JIS

DN	15	20	25	32	40	50
d	20	25	32	40	50	63
Inch	1/2"	3/4"	1"	1 1/4"	1 1/2"	2"
H	87	89	96	135	140	153
B	85	85	85	138	138	138
F	25	25	25	44	44	44
K	M6	M6	M6	M8	M8	M8
Hub	13	13	15	22	22	30
L	130	150	160	180	200	230
E	96	105	125	140	150	165
M	18,6	16,5	20	25,5	32	38,5

(Dimensions in mm)



Screw Connection Diagram Fixed Flange

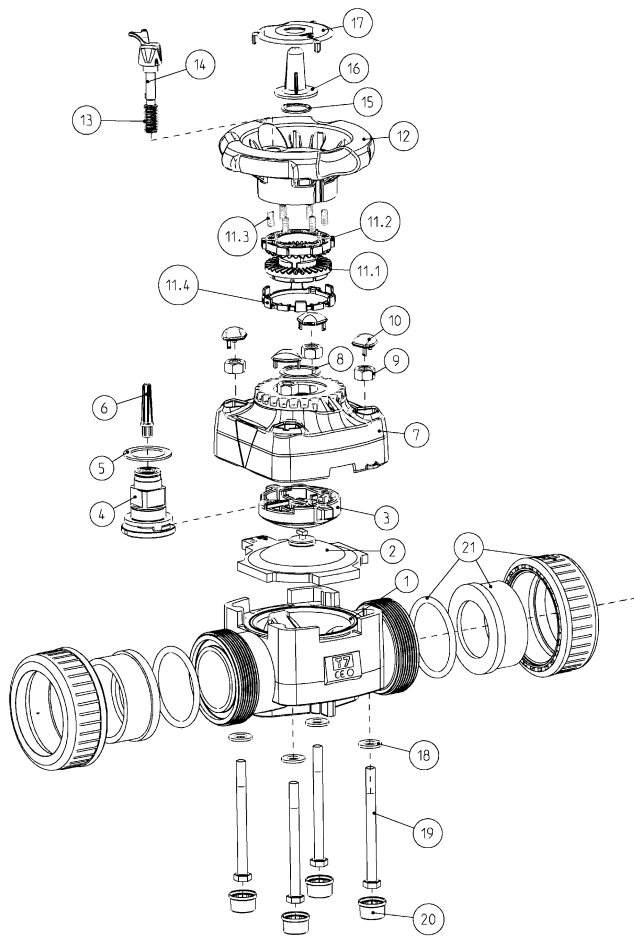
Multinorm DIN-ANSI-JIS

	DN	15	20	25	32	40	50
Norm	d	20	25	32	40	50	63
	Inch	1/2"	3/4"	1"	1 1/4"	1 1/2"	2"
	DIN 2501	b	14	14	14	18	18
	Z	65	75	85	100	110	125
ANSI Class 150	b	15,5	15,5	15,5	15,5	15,5	19
	Z	60,3	69,8	79,3	89	98,5	120,6
JIS 10 k	b	15	15	19	19	19	19
	Z	70	75	90	100	105	120

(Dimensions in mm)

EXPLOSION DRAWING

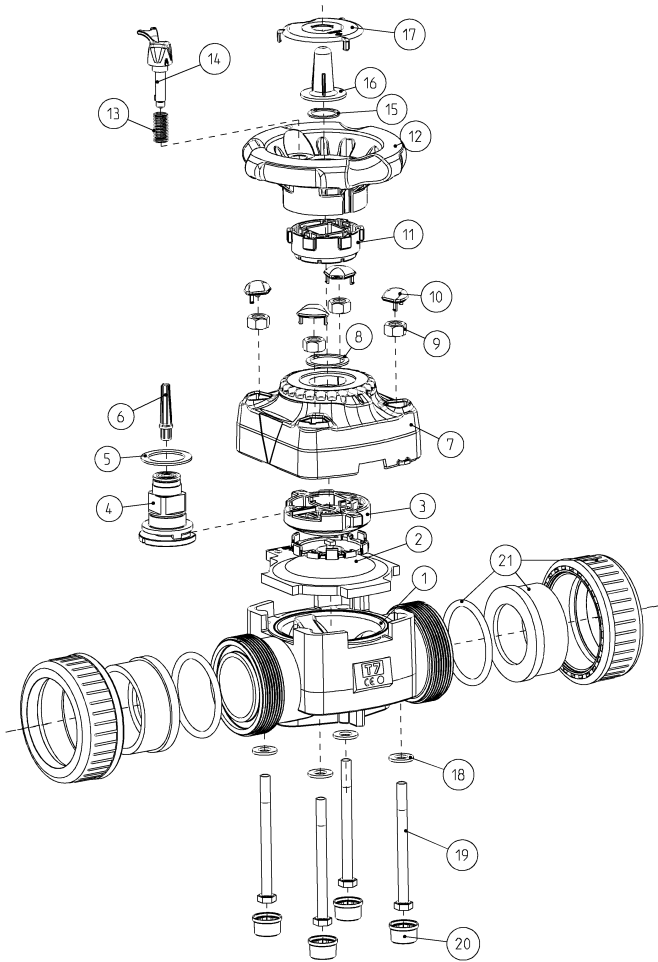
With Torque Limiter



No.	Description	Material
1.	Lower part	PVDF
2.	Diaphragm	FPM EPDM+PTFE
3.	Pressure body	PP-GF
4.	Spindle assembly	Brass & 1.4305
5.	Sliding washer	PTFE
6.	Indicator pin	PS
7.	Upper part	PP-GF
8.	Circlip	A4
9.	Hexagon nut	PTFE-coated
10.	Cover cap	ABS
11.	Torque Limiter	
11.1.	Lower part	POM
11.2.	Upper part	PA
11.3.	Spring	1.4310
11.4.	Support- Ring (DN32-50)	ABS
12.	Handwheel	PP-CF
13.	Spring	1.4401
14.	Latch pin	PBT
15.	Circlip	Galvanized spring steel
16.	Inspection glass	ABS
17.	Inspection glass Holder	ABS
18.	Rip-Lock washer	A4
19.	Hexagon screw	A2
20.	Cover cap	PE
21.	Connection variant	Union O-Ring Union nut Solvent socket Thread socket PE spigot PE socket

EXPLOSION DRAWING

without Torque Limiter



No.	Description	Material
1.	Lower part	PVDF
2.	Diaphragm	FPM EPDM+PTFE
3.	Pressure body	PP-GF
4.	Spindle assembly	Brass +1.4305
5.	Sliding washer	PTFE
6.	Indicator pin	PS
7.	Upper part	PP-GF
8.	Circlip	A4
9.	Hexagon nut	PTFE-coated
10.	Cover cap	ABS
11.	Actuating unit	PP-CF
12.	Handwheel	PP-CF
13.	Spring	1.4401
14.	Latch pin	PBT
15.	Circlip	Galvanized spring steel
16.	Inspection glass	ABS
17.	Inspection glass Holder	ABS
18.	Rip-Lock washer	A4
19.	Hexagon screw	A2
20.	Cover cap	PE
21.	Connection variant Union	
	O-Ring	EPDM / FPM
	Union nut	PVC-U
	Solvent socket	PVC-U
	Thread socket	PVC-U
	PE spigot	PE
	PE socket	PE

Accessories / Spare Parts

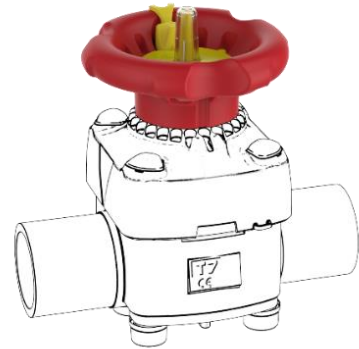
Handwheel Unit

With Torque Limiter DN15 – DN50

With Marking at Handwheel (see sketch detail)

Consisting of:

- Handwheel
- Torque – Limiter elements
- Latch pin + Spring
- Circlip
- Inspection glass
- Inspection glass holder



Handwheel Versions:

1 Version = DN15/DN20/DN25 for EPDM, FPM and PTFE Diaphragm

2 Version = DN32/DN40 for EPDM and FPM Diaphragm

3 Version = DN32/DN40 for PTFE Diaphragm

4 Version = DN50 for EPDM and FPM Diaphragm

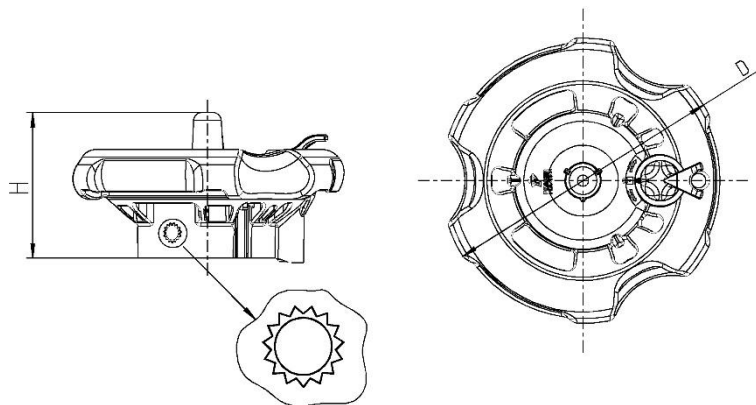
5 Version = DN50 for PTFE Diaphragm

Without Torque Limiter DN15 – DN50

Without Marking at Handwheel (see sketch detail)

Consisting of:

- Handwheel
- Actuating unit
- Latch pin + Spring
- Circlip
- Inspection glass
- Inspection glass holder



Handwheel Versions:

6 Version = DN15/DN20/DN25

7 Version = DN32/DN40/DN50

DN	15 – 25	32 – 50
d	20 – 32	40 – 63
Inch	1/2" – 1"	1 1/4" – 2"
D	85	138
H	42	70

(Dimensions in mm)

Accessories / Spare Parts

Upper part assembly

Consisting of:

- Pressure body
- Spindle assembly
- Sliding washer
- Indicator pin
- Upper part
- Circlip
- Hexagon nut
- Cover cap (No. 10)

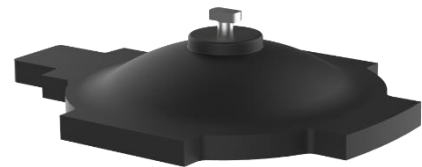


Upper part Versions:

- 1 Version = DN15/DN20
- 2 Version = DN25
- 3 Version = DN32/DN40
- 4 Version = DN50

Diaphragm

- Material: FPM
- Bayonet connection
- Optimized contour



Coated Diaphragm

- Material: EPDM PTFE coated
- Bayonet connection
- Optimized contour



Accessories / Spare Parts

Accessories / Spare Parts for Union Variant

Union End / Union Nut / Connection O-Ring

- The inserts and union nuts from the Accessories Diaphragm Valve, can be combined.
- The O-Rings from the PVC-U IBG range for Unions, can be combined with the same nominal diameter of the Diaphragm valves with Union.



PLS – Praher Labeling System

Features

- Material ABS
- Unique permanent marking
- Reliable, indelible marking by paint pen or laser
- Standard version in the colors yellow, blue, green and red
- Marking plates are simple to replace
- Corrosion resistant
- No effect on the function of the handle

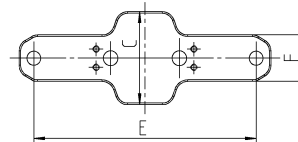
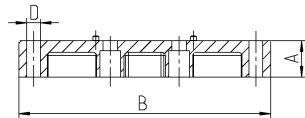


Accessories / Spare Parts

Mounting Plates

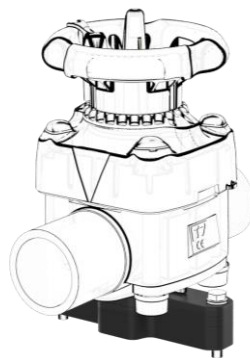
Use as mounting aid and height compensation.

- Material: PP-CF
- Floor / ceiling / wall -mounting
- Additional screws necessary



DN	15 - 25			32 - 50		
d	20 - 32			40 - 63		
Inch	1/2" - 1"			1 1/4" - 2"		
Version	1	2	3	4	5	6
A	23	16	3,5	23,5	18,5	7,5
B	104	104	104	164,5	164,5	164,5
C	45	45	45	60	60	60
D	7	7	7	9	9	9
E	90	90	90	145,5	145,5	145,5
F	22	22	22	30	30	30

(Dimensions in mm)



Note on the Use of Mounting Plates:

The table shows the number of mounting plates (e.g. 1x) and the mounting plate version (e.g. **2**).

These combinations can be used to compensate for height differences between the various nominal diameters from the M1 ball valve to the T7 diaphragm valve.

		Ball Valve M1								
		G[mm]	33	40	43	51	56	64	85	100
Diaphragm Valve T7	H [mm]	DN	15	20	25	32	40	50	65	80
	18,6	15	1x 2 	1x 1 	1x 1 1x 3	1x 1 3x 3	2x 2 2x 3	2x 1 	4x 2 1x 3	5x 2 1x 3
	16,5	20		1x 1 	1x 1 1x 3	1x 1 3x 3	2x 2 2x 3	2x 1 	4x 2 1x 3	5x 2 1x 3
	20	25			1x 1 	1x 1 2x 3	2x 2 1x 3	1x 1 1x 2 1x 3	4x 2 	3x 1 3x 3
	25,5	32				1x 4 	1x 4 1x 6	1x 4 2x 6	2x 5 3x 6	1x 4 2x 5 2x 6
	32	40					1x 4 	1x 4 1x 6	2x 5 2x 6	1x 4 2x 5 1x 6
	38,5	50						1x 4 	1x 4 3x 6	1x 4 2x 5

Examples for all nominal diameters of the Diaphragm Valve T7 combined with a Ball Valve M1 DN80:

